



Professional Development
Service for Teachers

An tSeirbhís um Fhorbairt
Ghairmiúil do Mhúinteoirí

www.pdst.ie



© PDST 2014

This work is made available under the terms of the Creative Commons Attribution Share Alike 3.0 Licence <http://creativecommons.org/licenses/by-sa/3.0/ie/>. You may use and re-use this material (not including images and logos) free of charge in any format or medium, under the terms of the Creative Commons Attribution Share Alike Licence.



Revised Assessment Framework for Leaving Certificate Art Workshop 2

Advisor/Associate

Welcome

Key Messages

The use of primary sources is required in this Assessment Framework

Evidence of the design footprint is an integral component of the student's work

The authenticity of the work and the **adherence to the allowed timeframe** are essential ethical considerations

Objectives

To recap on some of the key content from Workshop 1

To explore ethical considerations in relation to the Assessment Framework

To interrogate a sample paper

To facilitate questions and answer session

Key Messages from Workshop 1

Adherence to the assessment regulations is crucial to ensure equality and fairness

This development brings assessment of Art into line with contemporary best practice

Imaginative Composition/Still Life, and Craftwork/Design will transact as Coursework

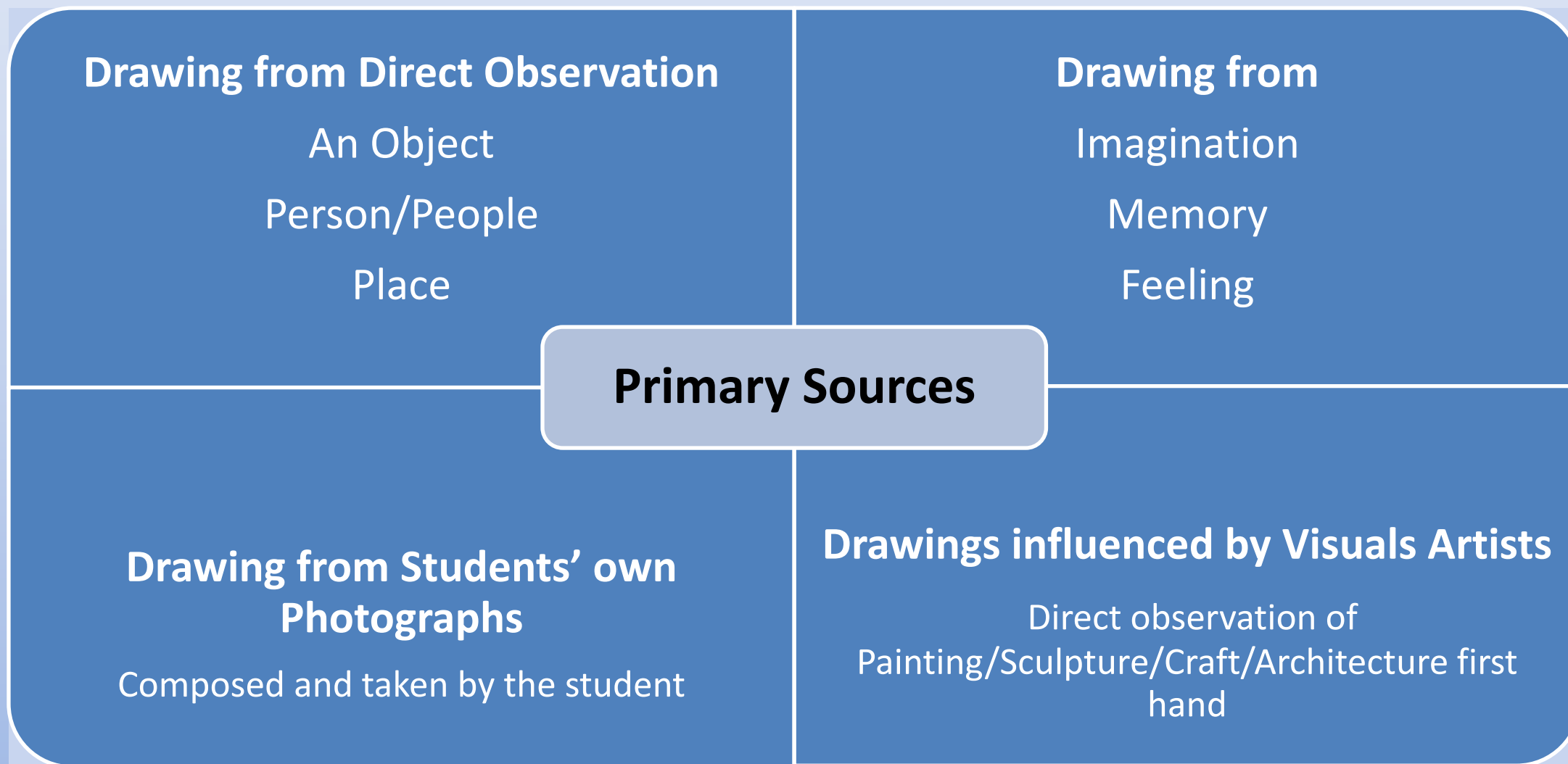
Key Content from Workshop 1

- Student at the **heart** of the process
 - Identifying their own theme
 - Researching their own ideas
 - Making their own decisions
 - Submitting their own individual unaided work
- The use of primary sources is **required**

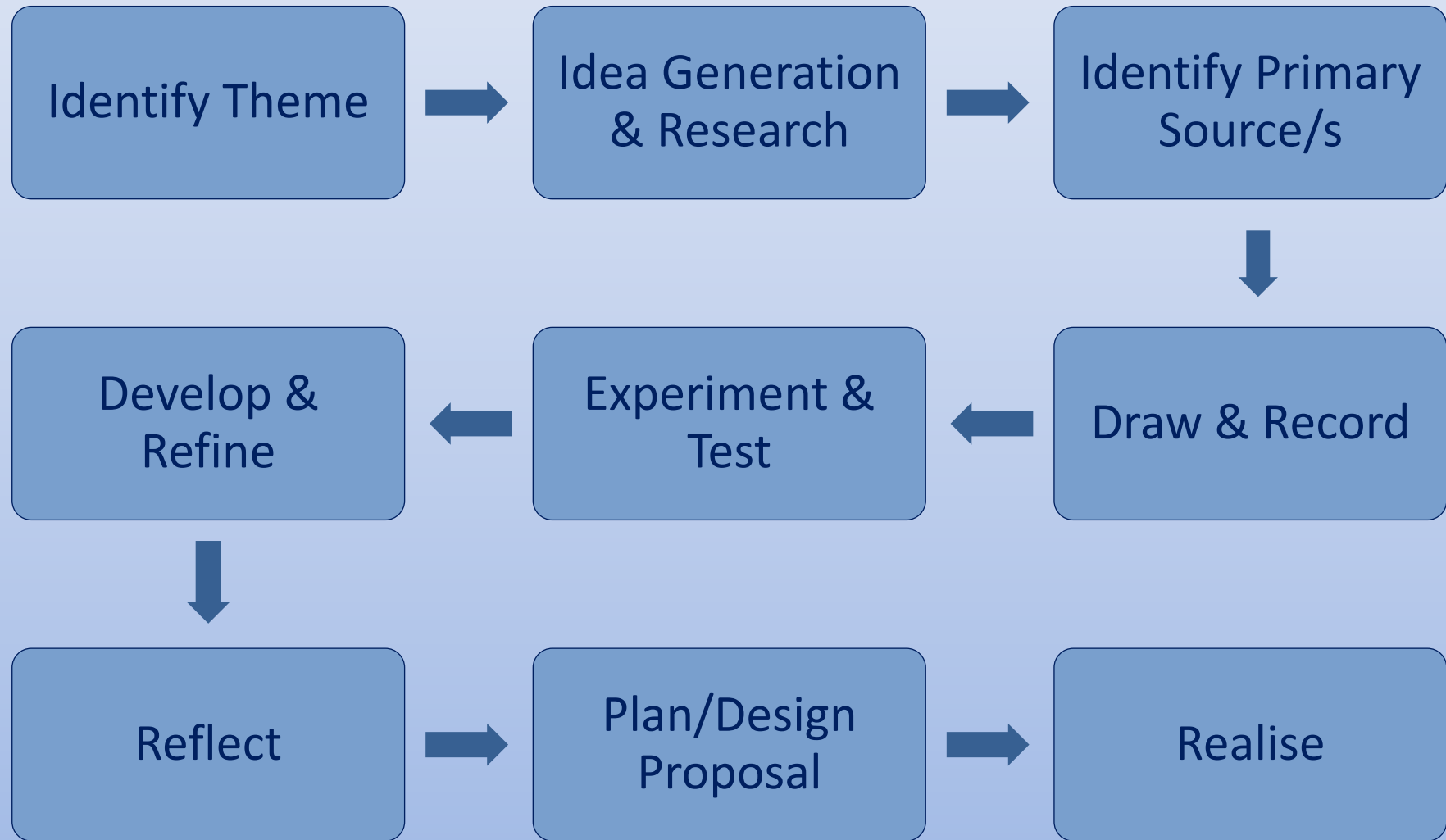
Primary Sources are required

Primary sources are sources, physical or conceptual, that are viewed in their original state and are not filtered through another person's interpretation of them.

Exploration of Primary Sources



Show Evidence of Design Footprint



The Process of Design Squiggle

UNCERTAINTY / PATTERNS / INSIGHTS

CLARITY / FOCUS



The Process of Design Squiggle by Damien Newman, Central Office of Design is licensed under a [Creative Commons Attribution-No Derivative Works 3.0 United States License](https://creativecommons.org/licenses/by-nd/3.0/).

Task 1 - Workbook - Initial Research

Group 1 - Research your theme using a dictionary

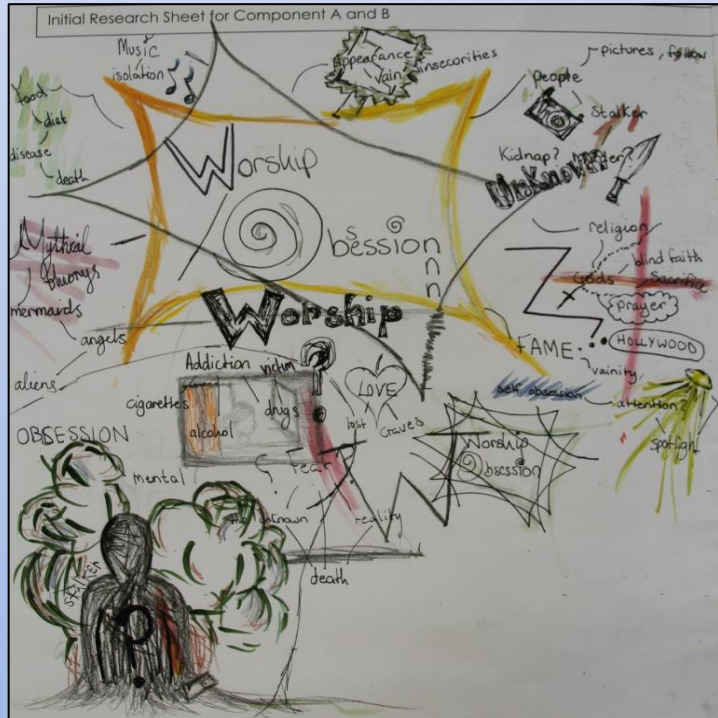
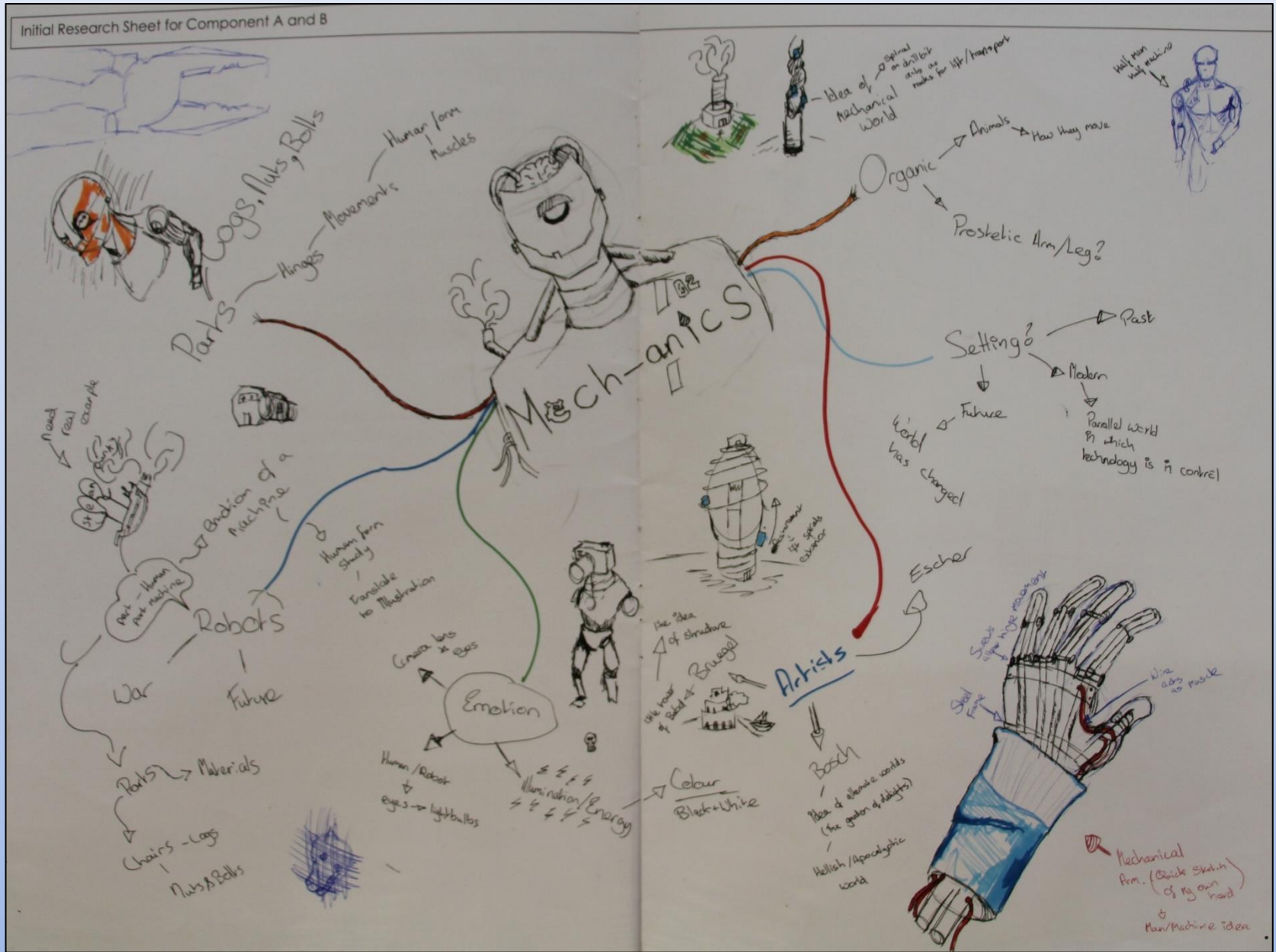
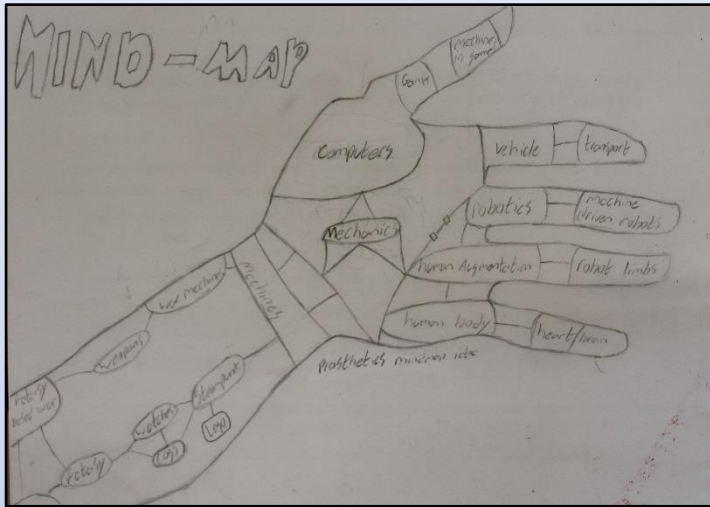
Group 2 - Research your theme using a thesaurus

Group 3 - Spider diagram using words

Group 4 - Spider diagram using visuals

Group 5 - Spider diagram using words and visuals

Group 6 - Visual Verbal Square



Task 2 – Workbook



Coimisiún na Scrúduithe Stáit
State Examinations Commission

LEAVING CERTIFICATE EXAMINATION

PILOT

ART COURSEWORK WORKBOOK

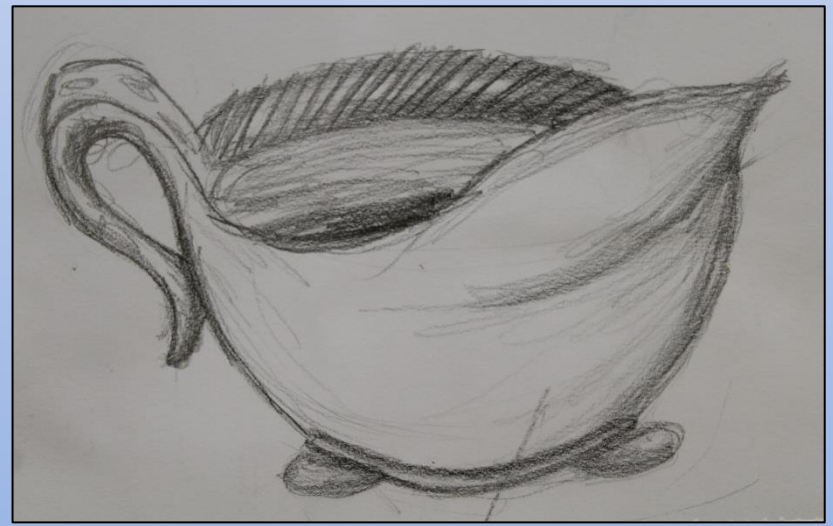
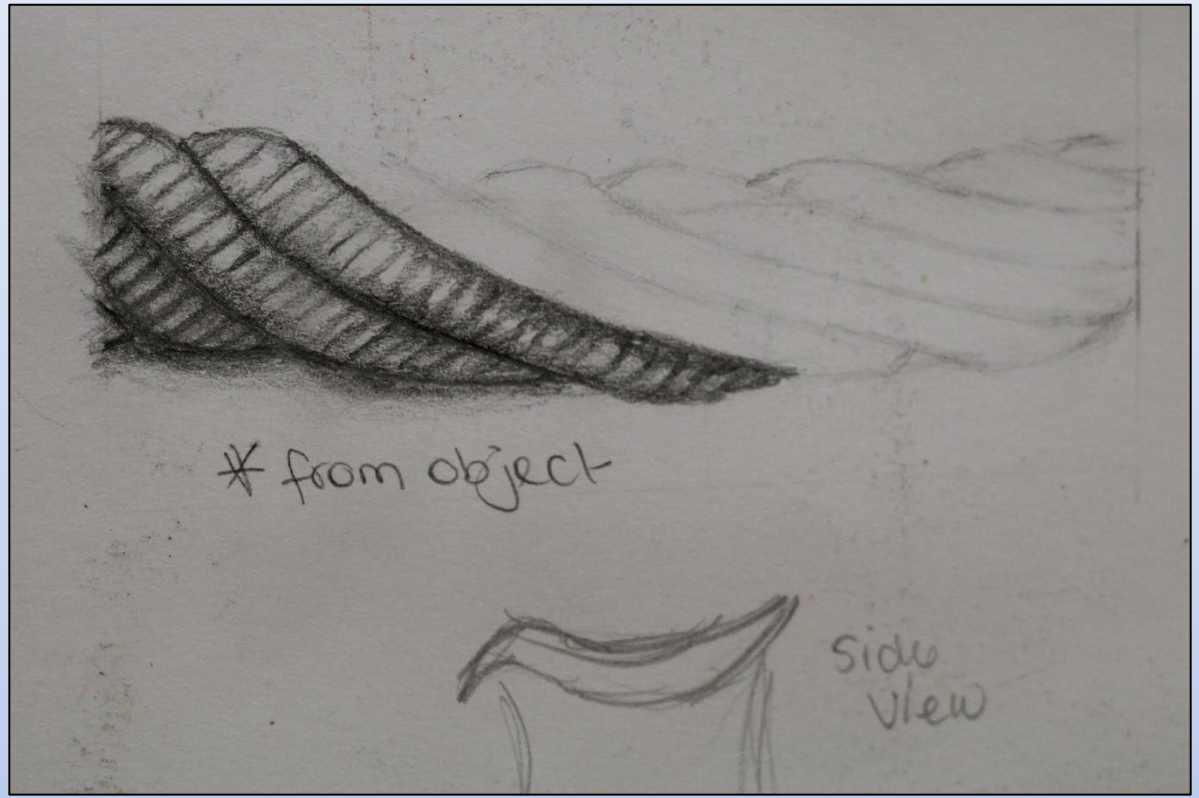
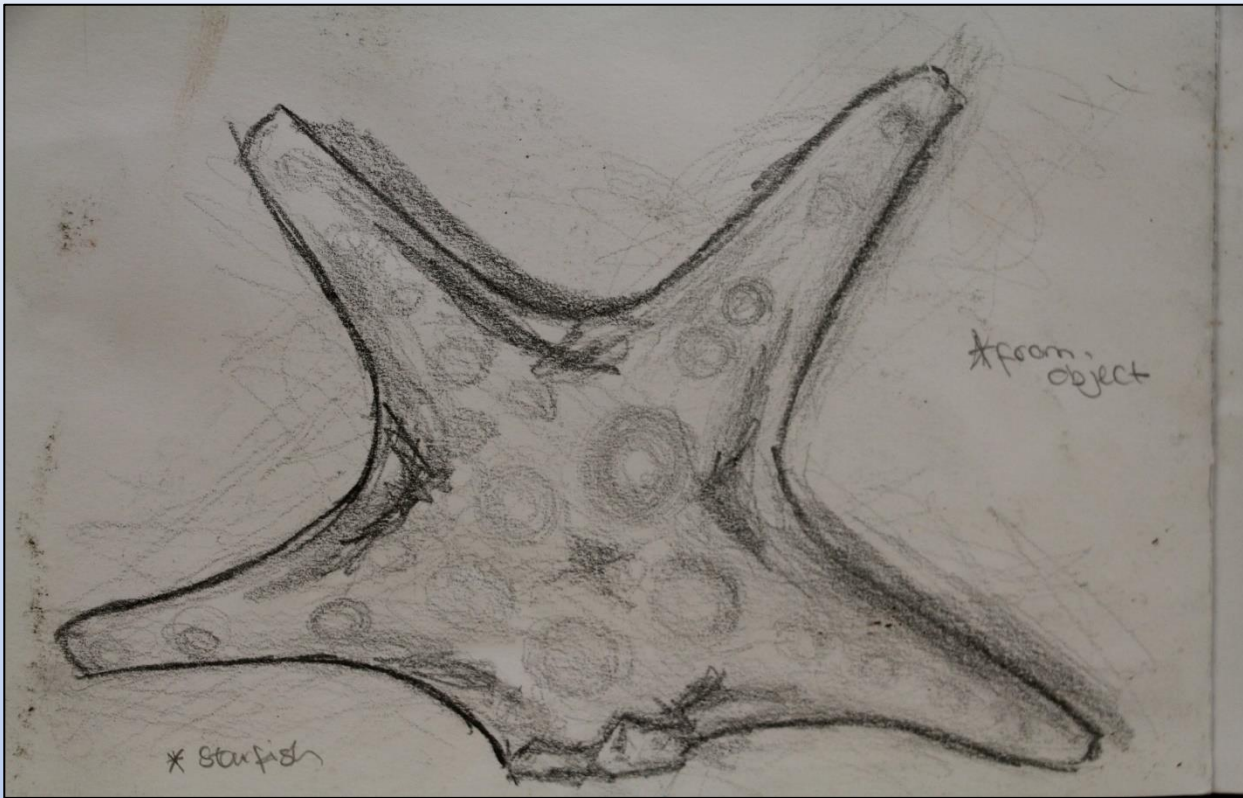
Imaginative Composition or Still Life
and
Craftwork or Design

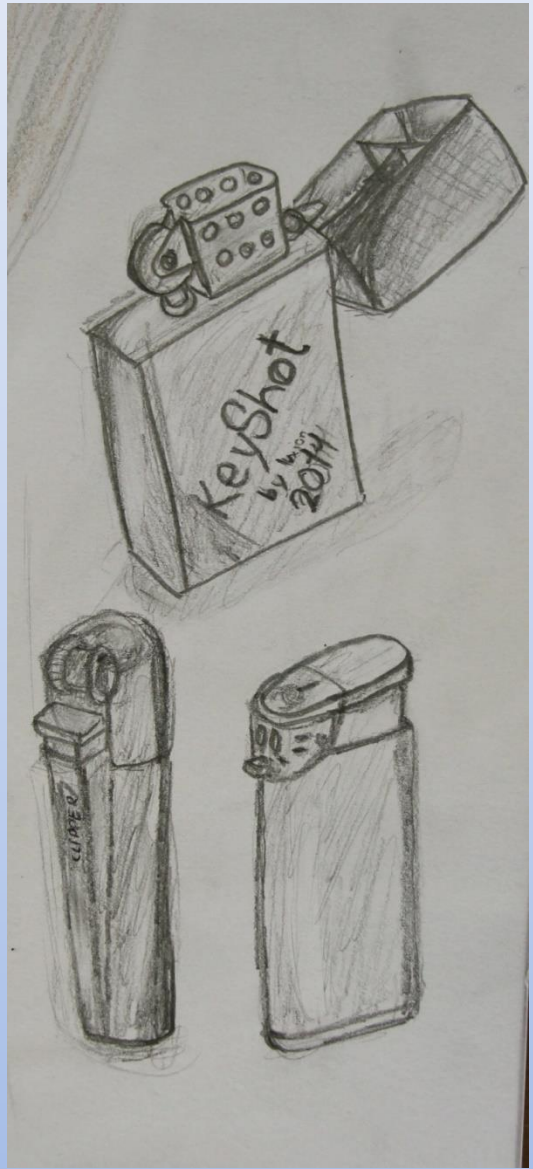
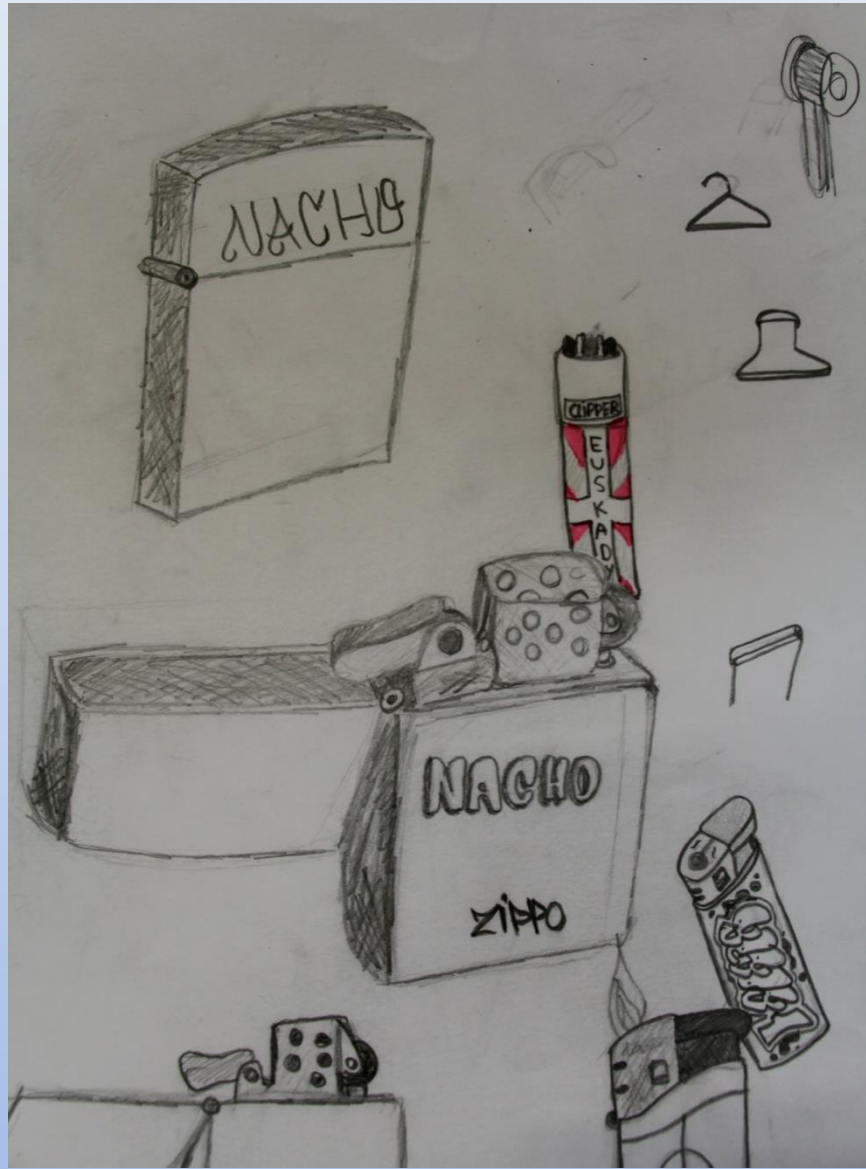
Higher Level

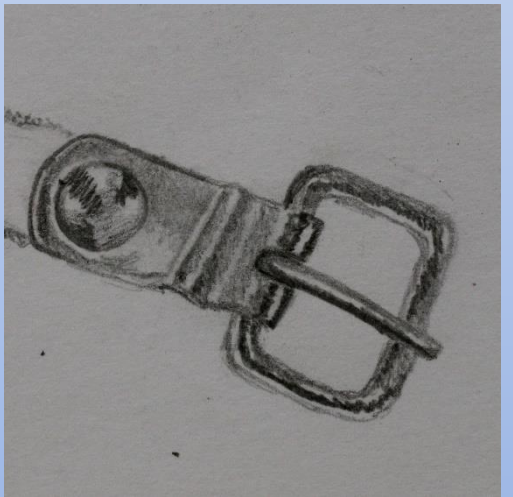
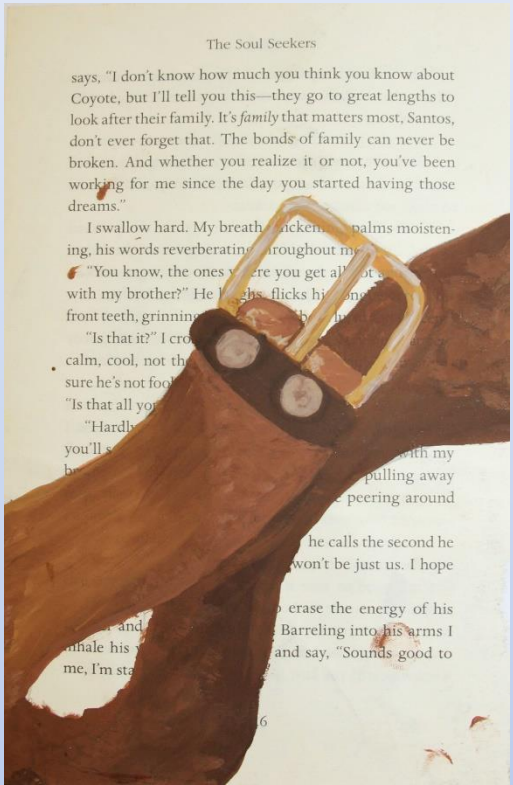
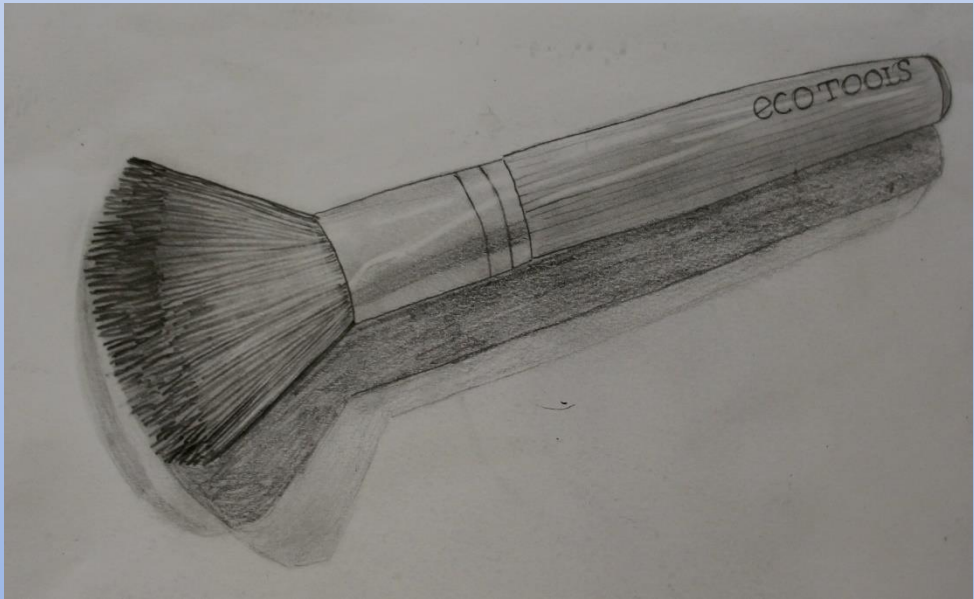
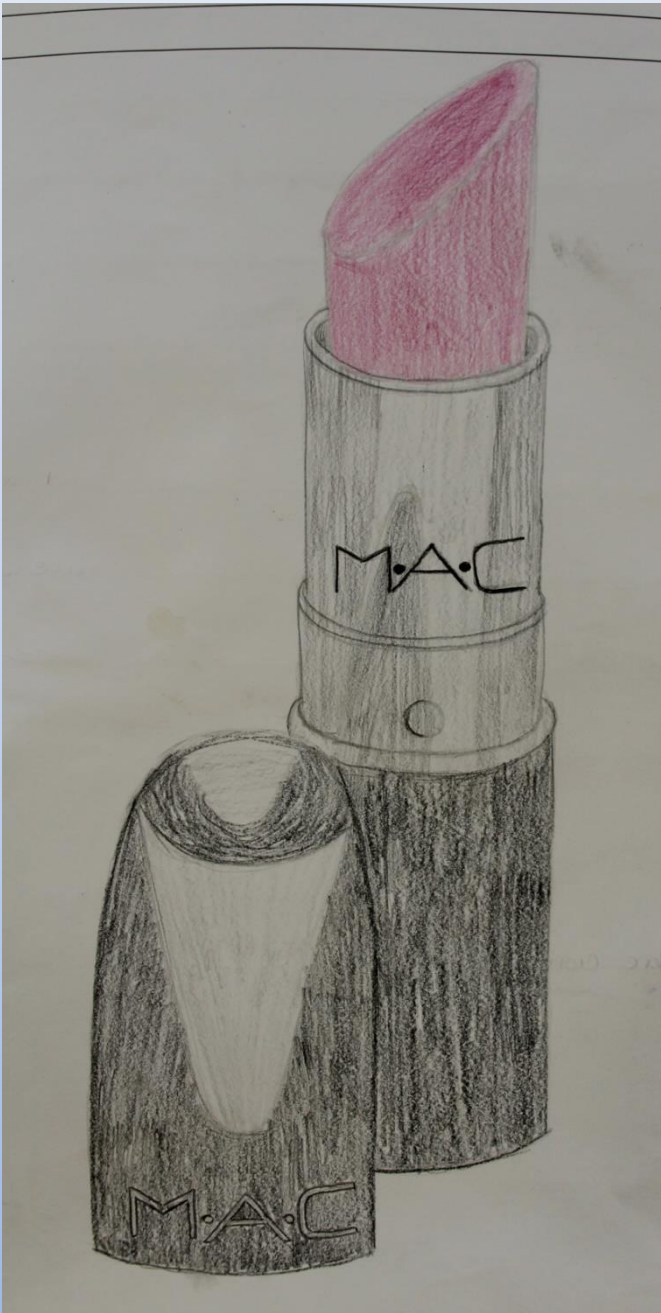
200 marks are assigned to this paper, i.e. 50% of the total marks for Art

This paper should be handed to candidates on _____

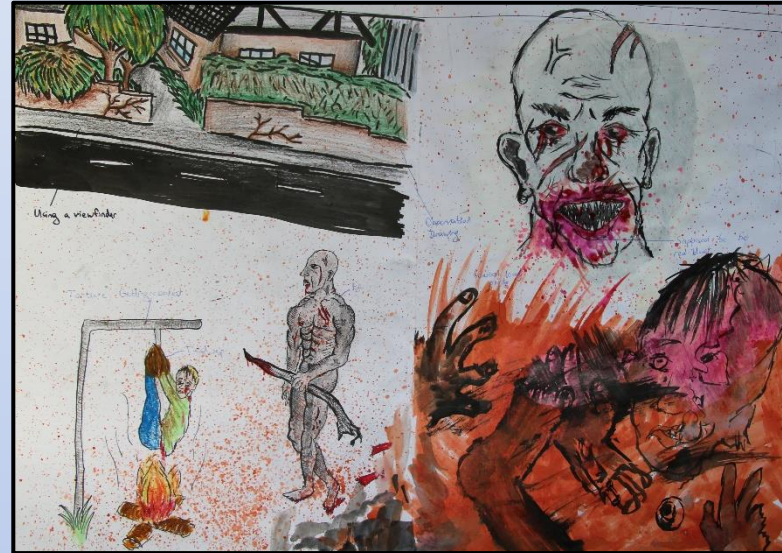
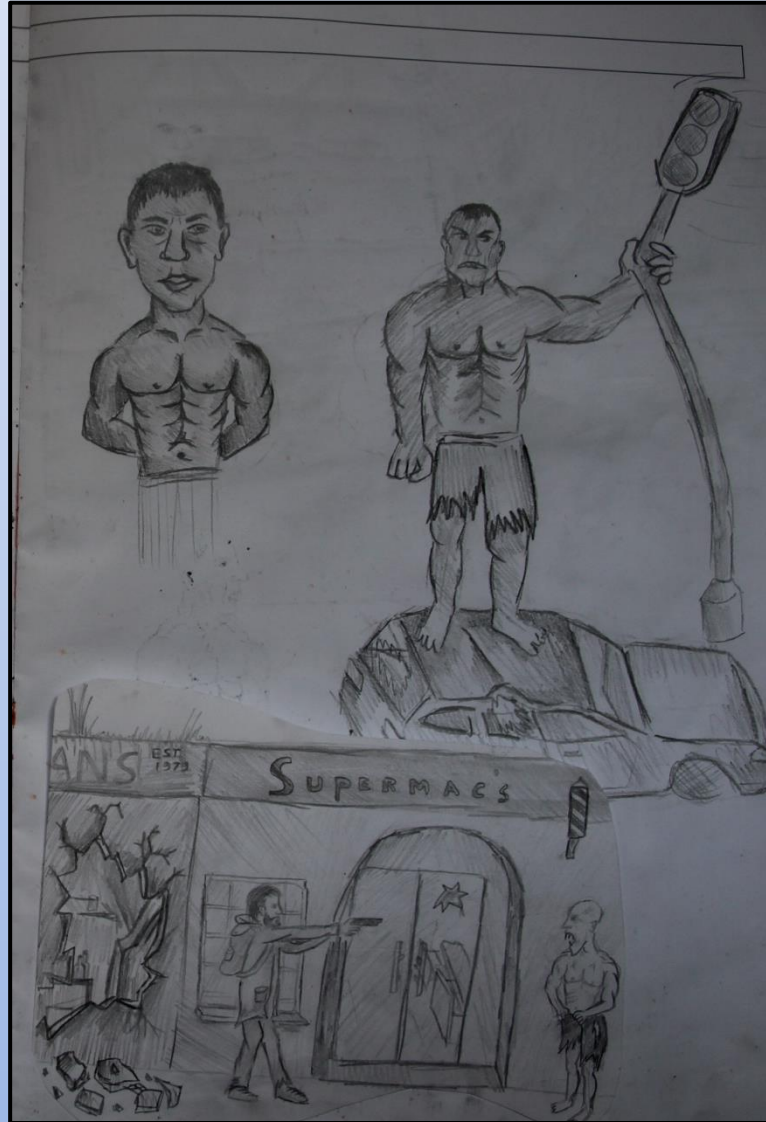
Make a 10 minute sketch of your
primary source

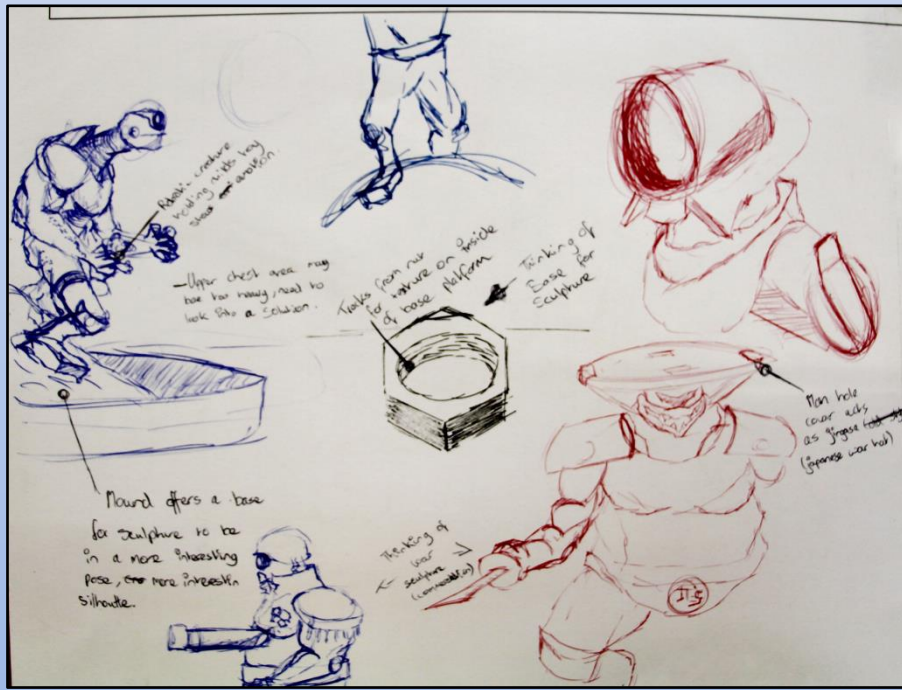
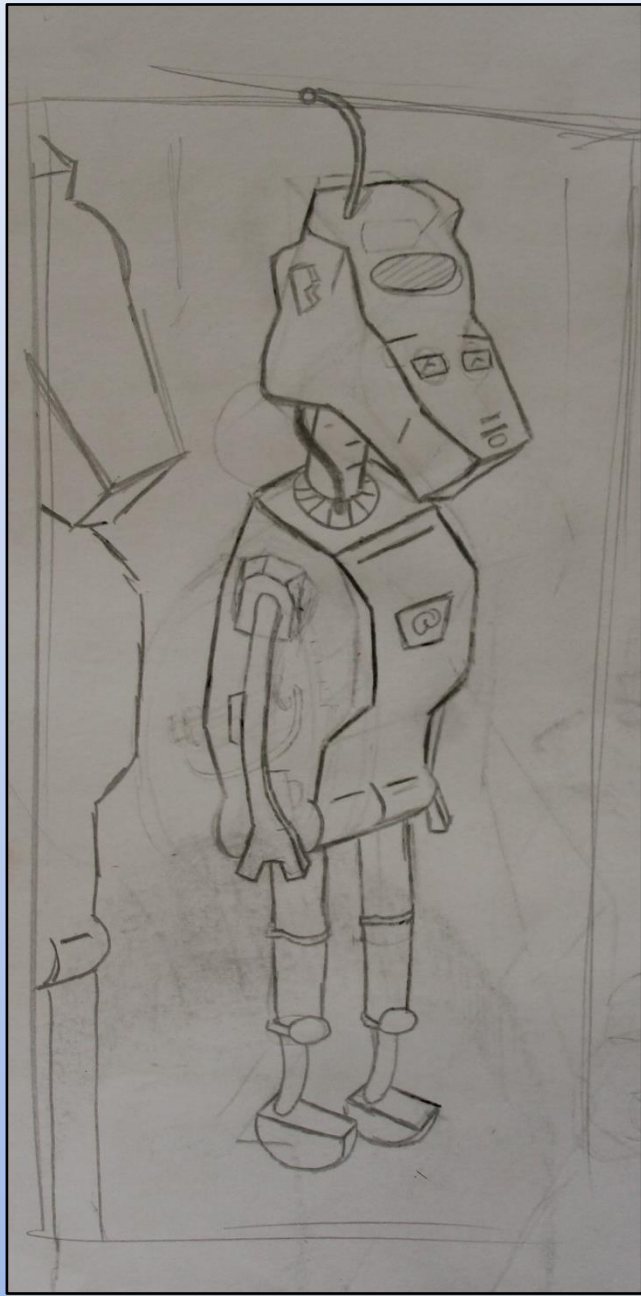


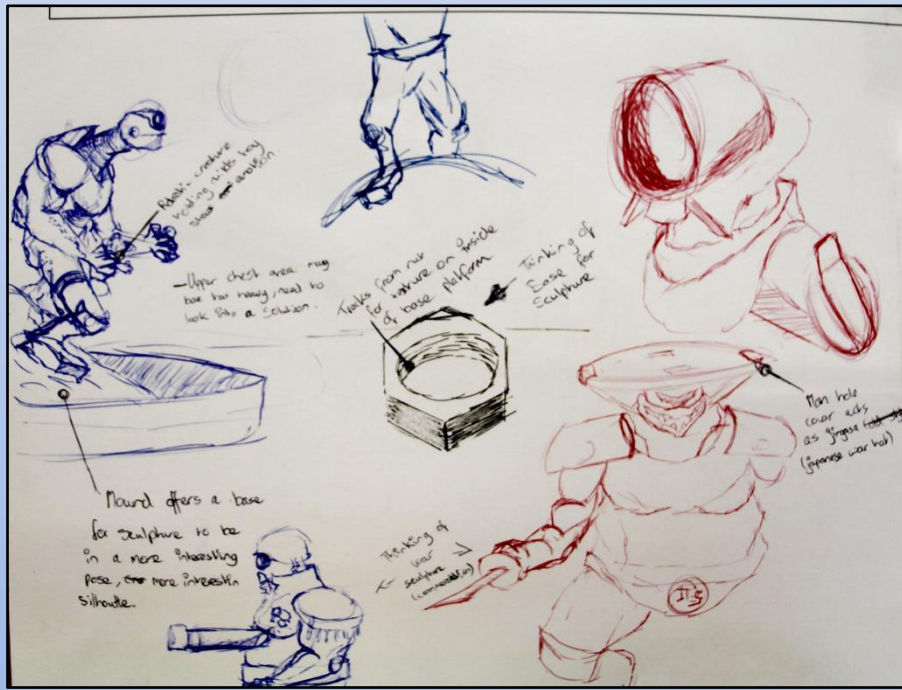
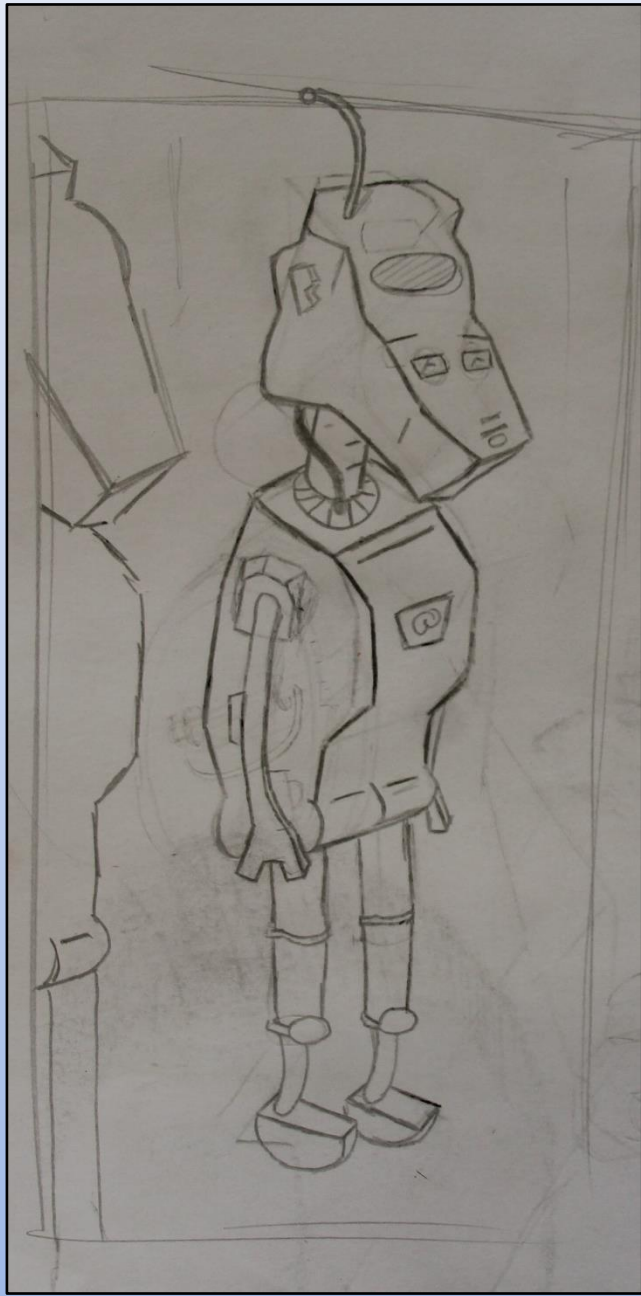


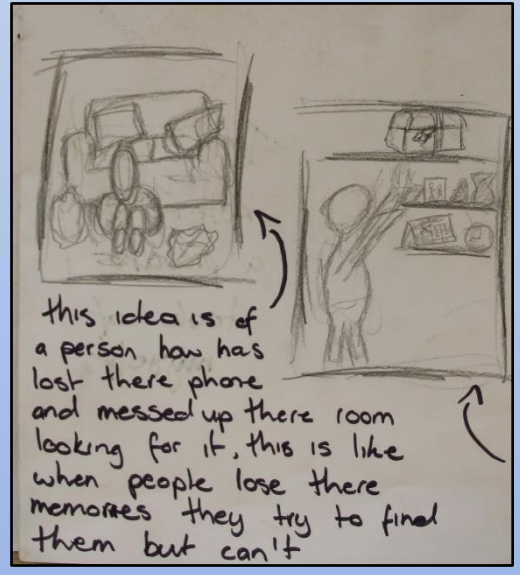
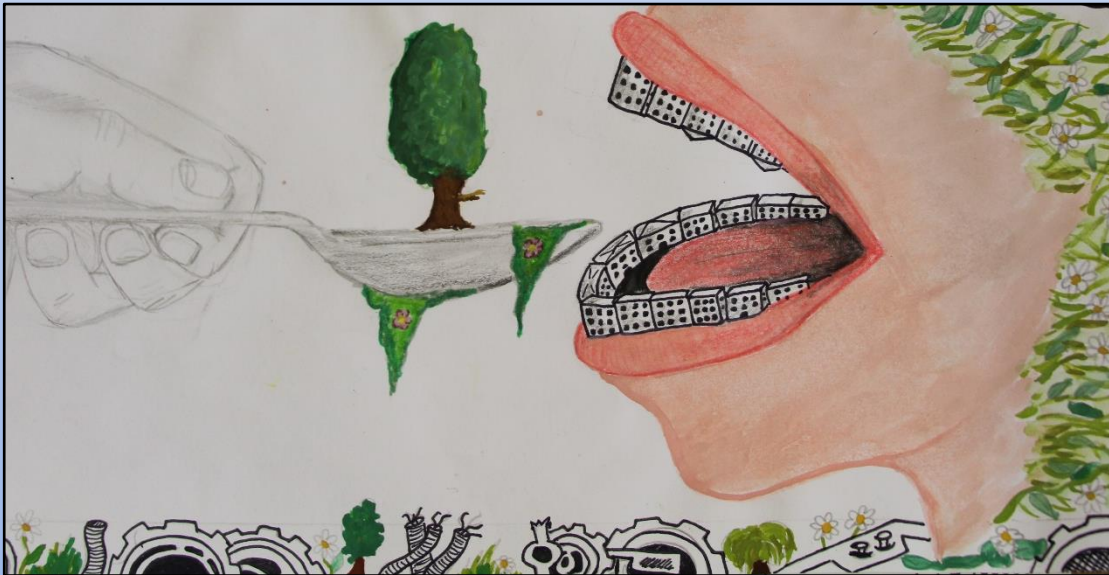
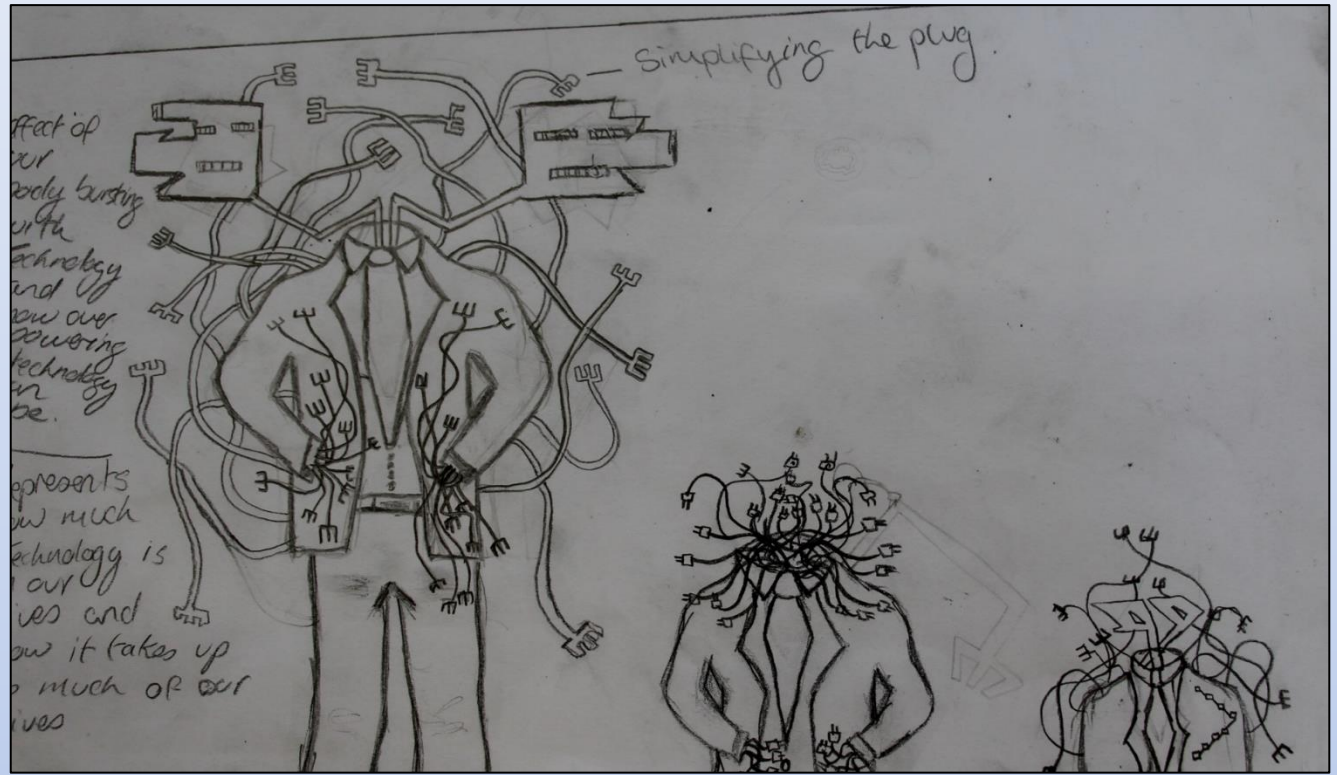
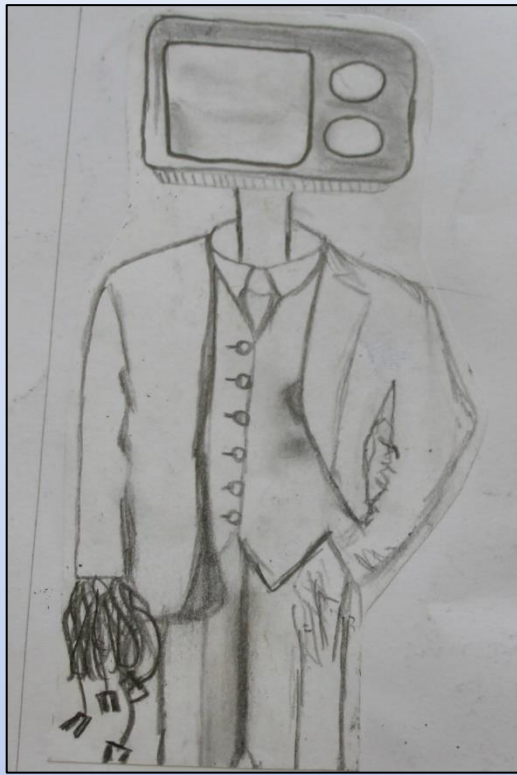
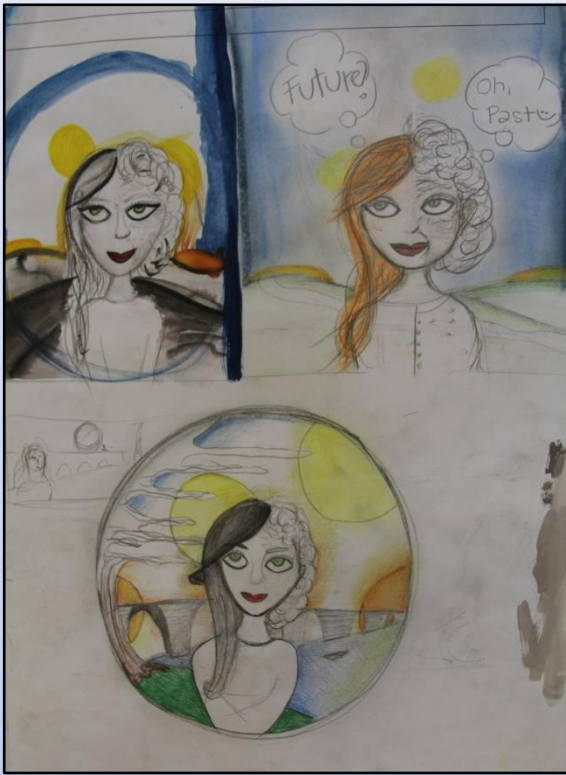


Drawing from Imagination



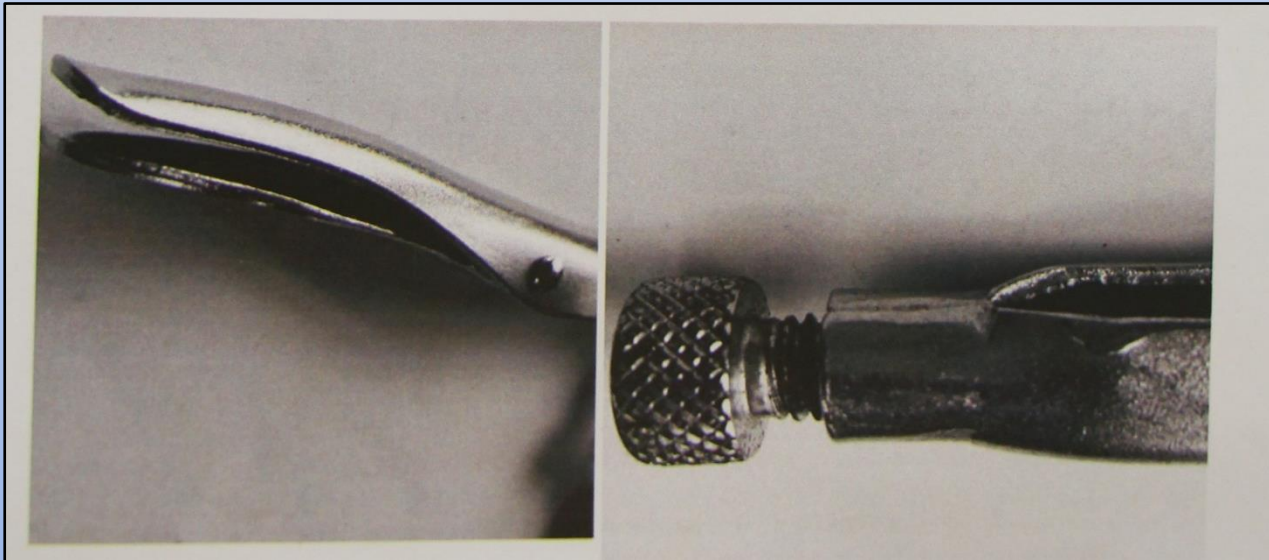
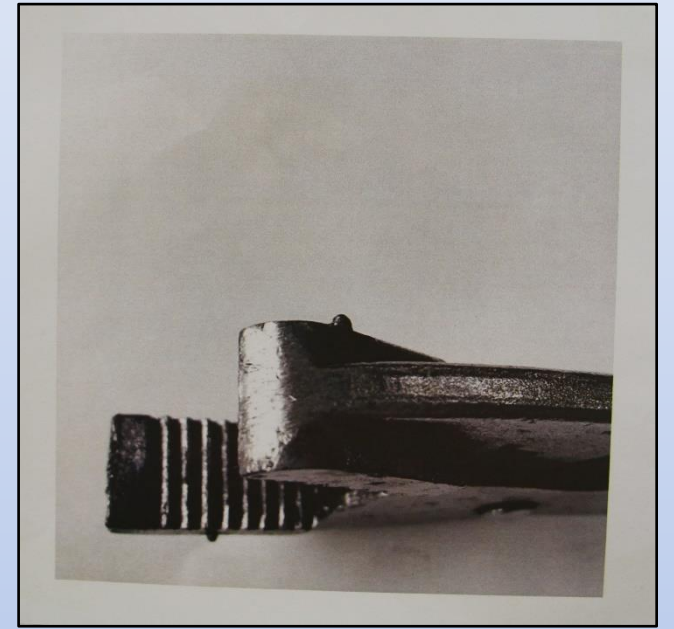
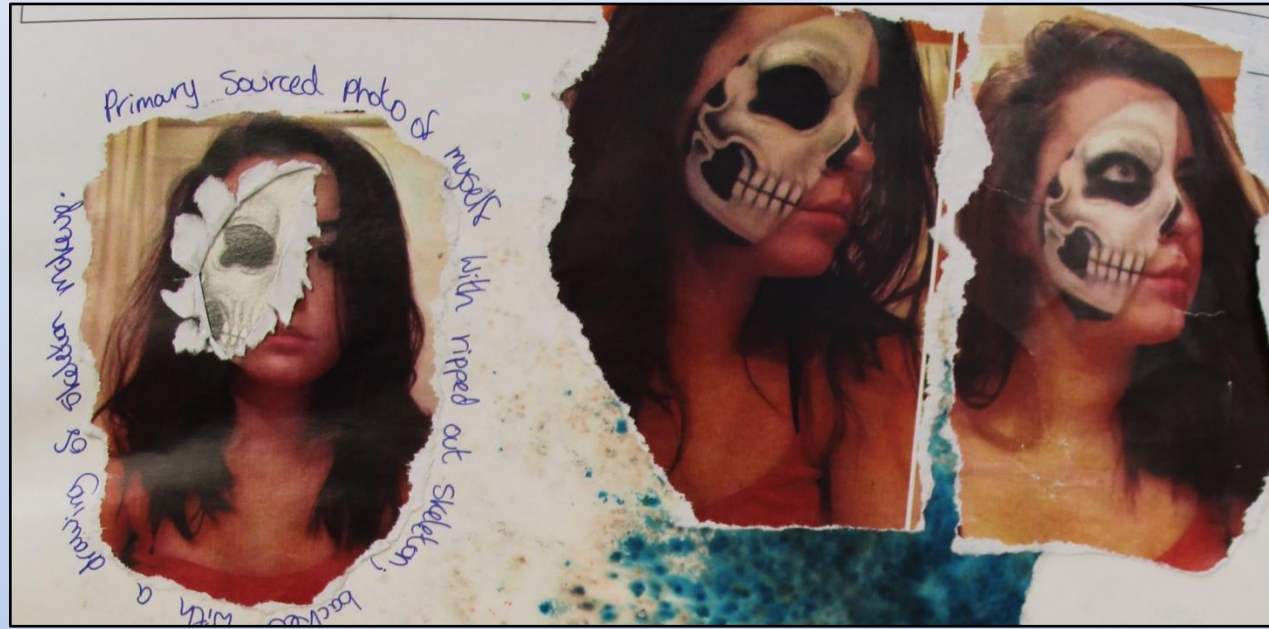








Photographs composed and taken by the student



Photographs composed and taken by the student



Using a Sculpture as a Primary Source

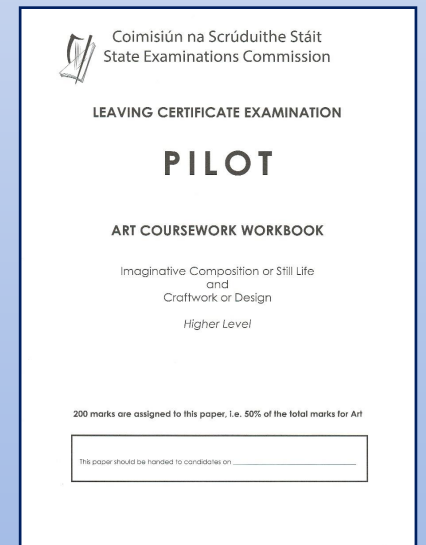
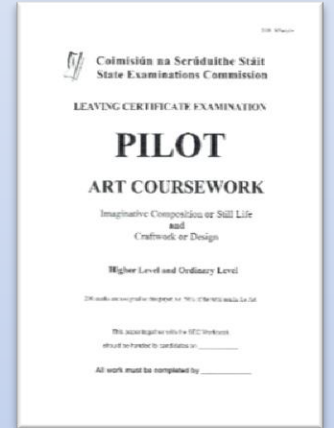


Task 3 – Draft Sample Paper & Workbook

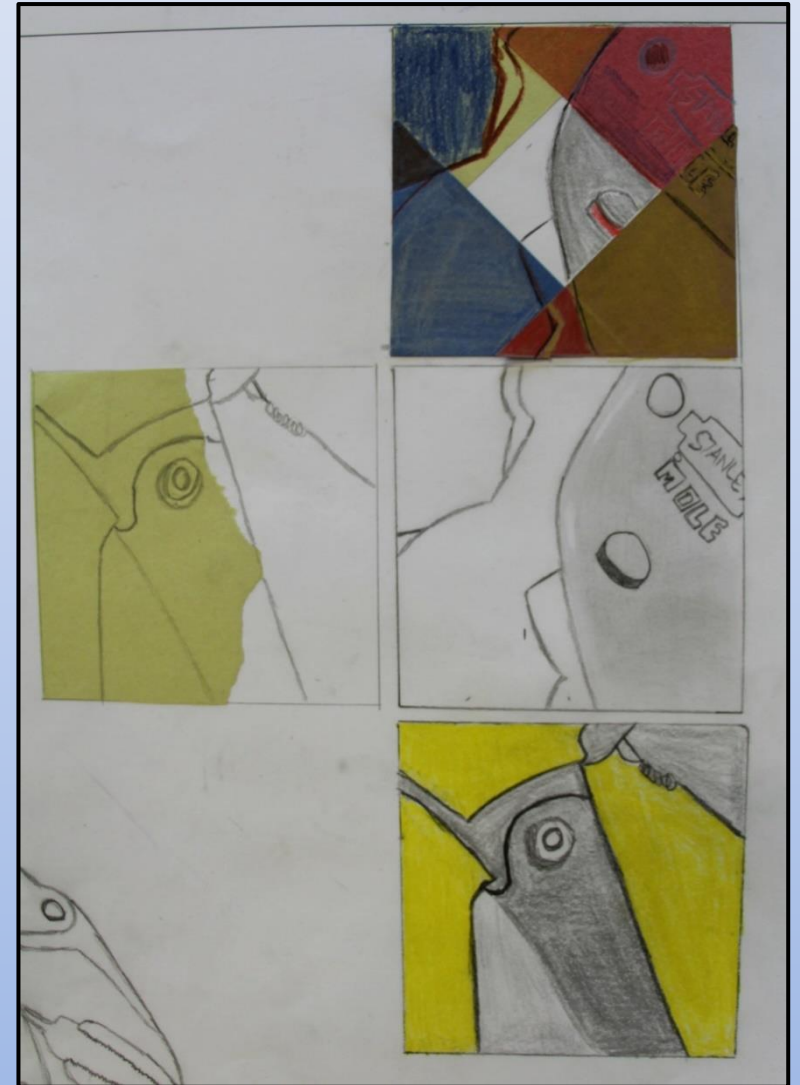
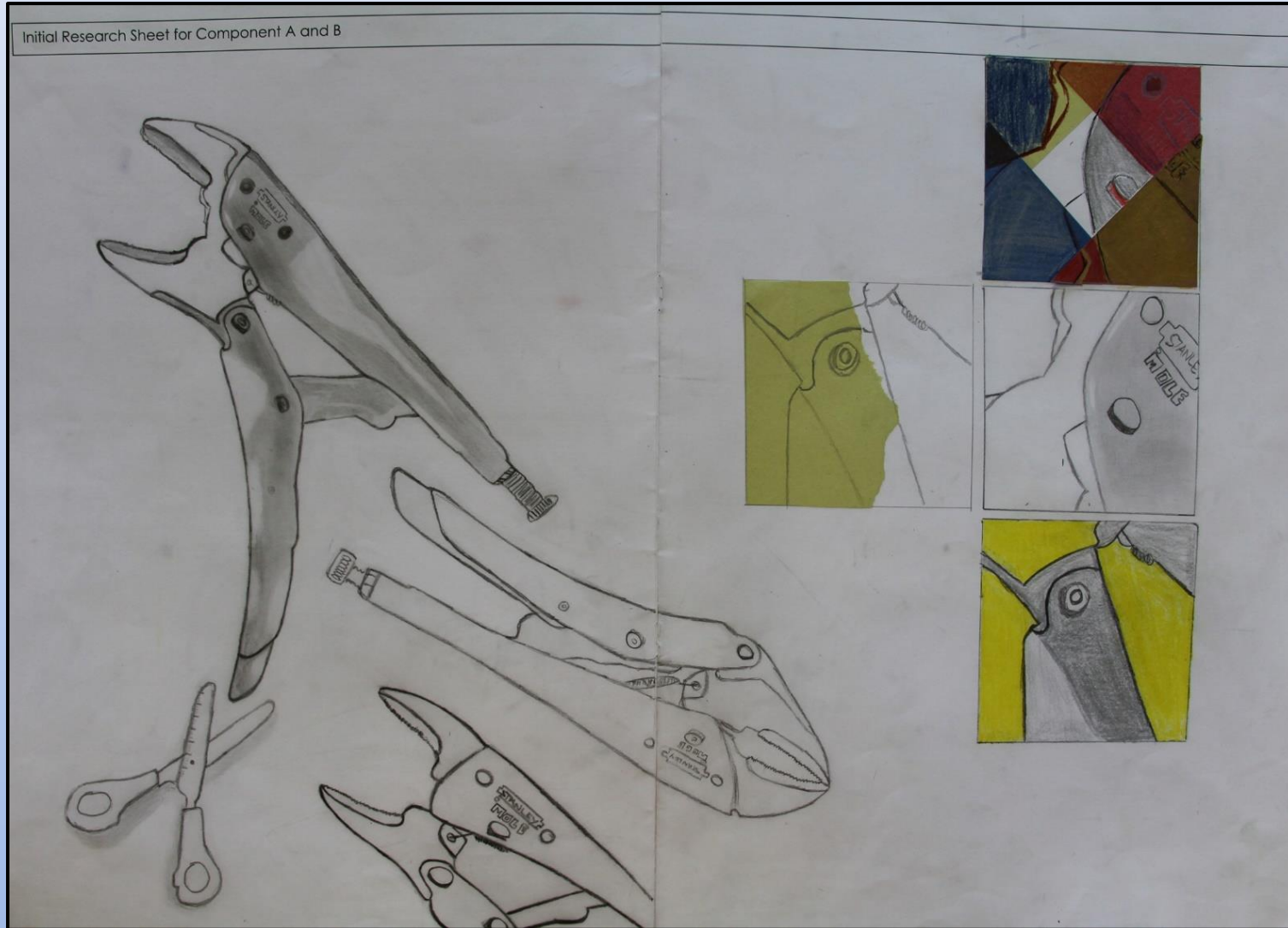
Select a question from the draft sample paper

Develop your drawing based on your chosen question

You have 15 minutes



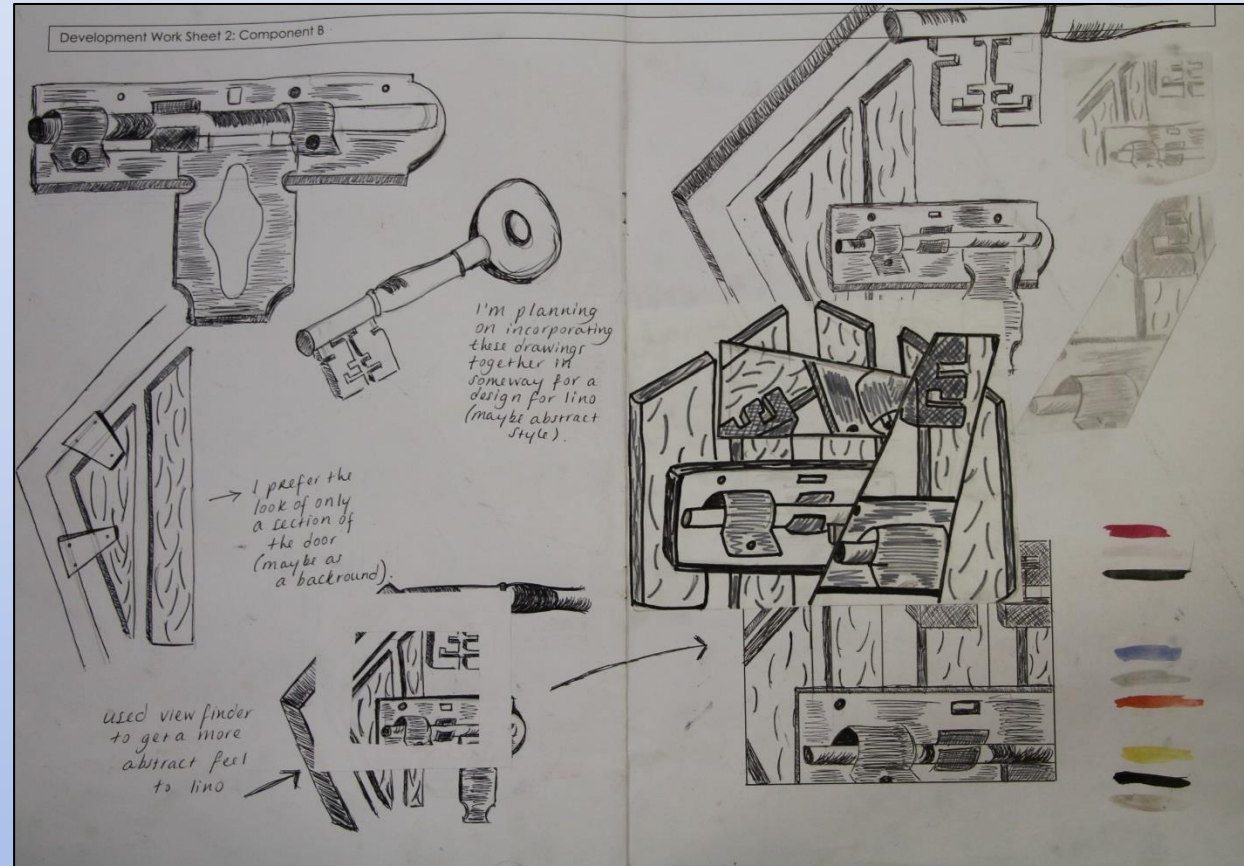
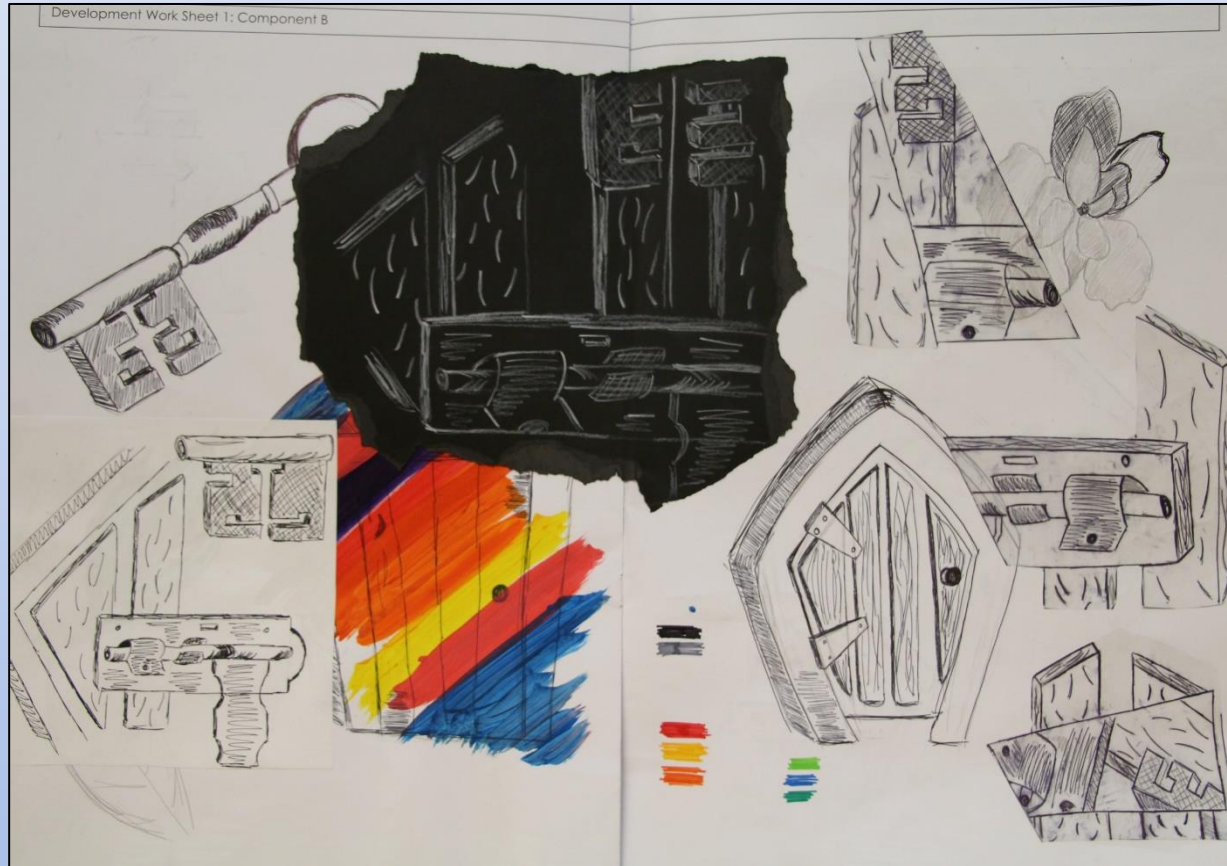
Developing Drawings from Observation



Developing Primary Source - Imagination

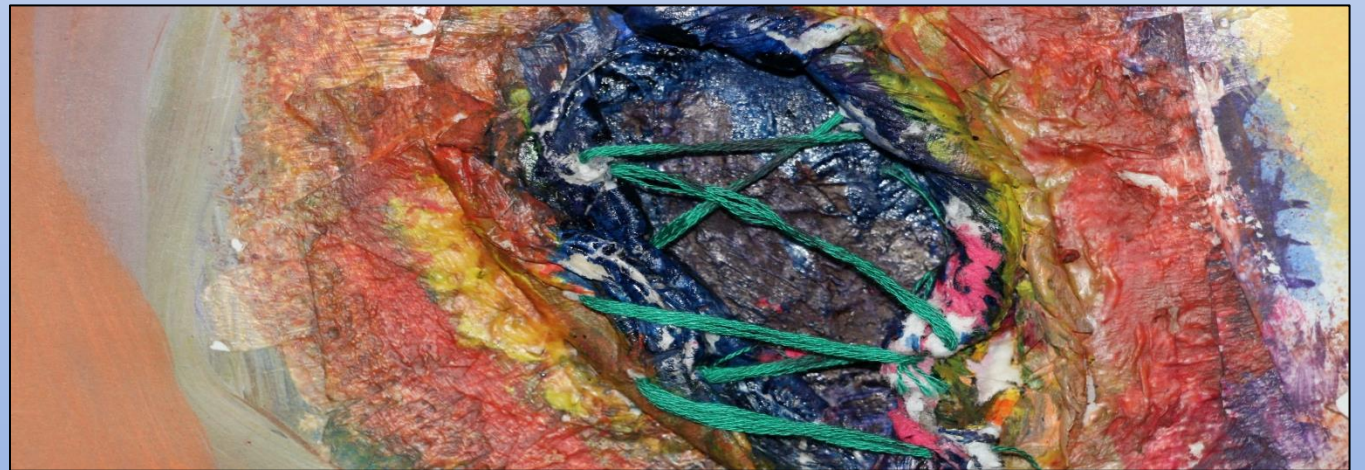
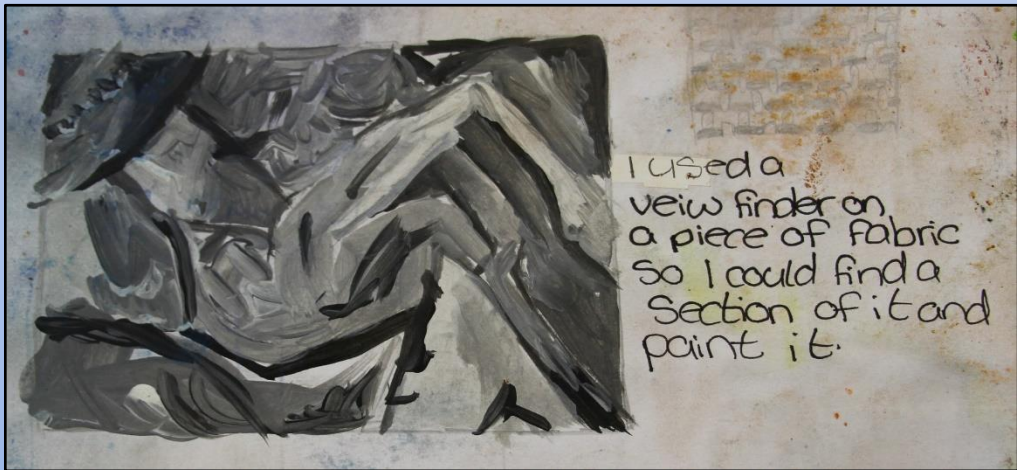
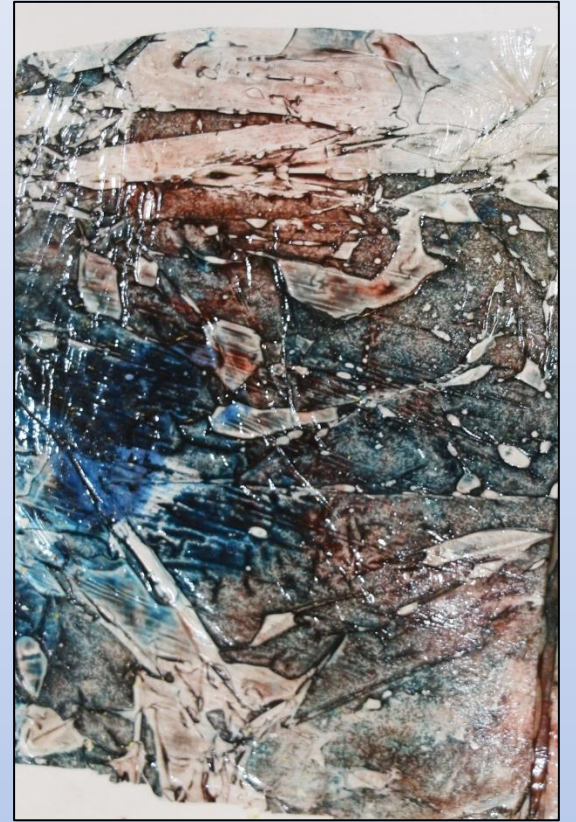
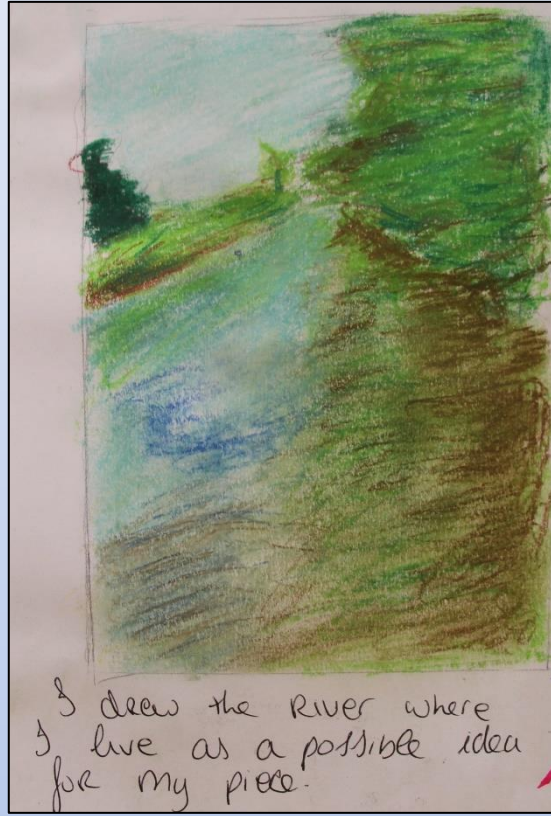


Developing Primary Source Drawings





Exploring and Experimenting with Materials







Still Life

Still Life



Development Work Sheet 2: Component A

I don't think these elephants in pencil is what I really want

This is one of my ideas, I would place these elephants on fabric to add detail.

This is another idea I have in mind. Here I would hang the elephant ornament on over two hooks on the back of a door. I didn't really like the shape of the door. I also think the colour of the door may take from the elephants. In my painting I want the elephants to be the main focus.

This painting is looked at shows backgrounds and objects when they hang, and the shadows they cast.

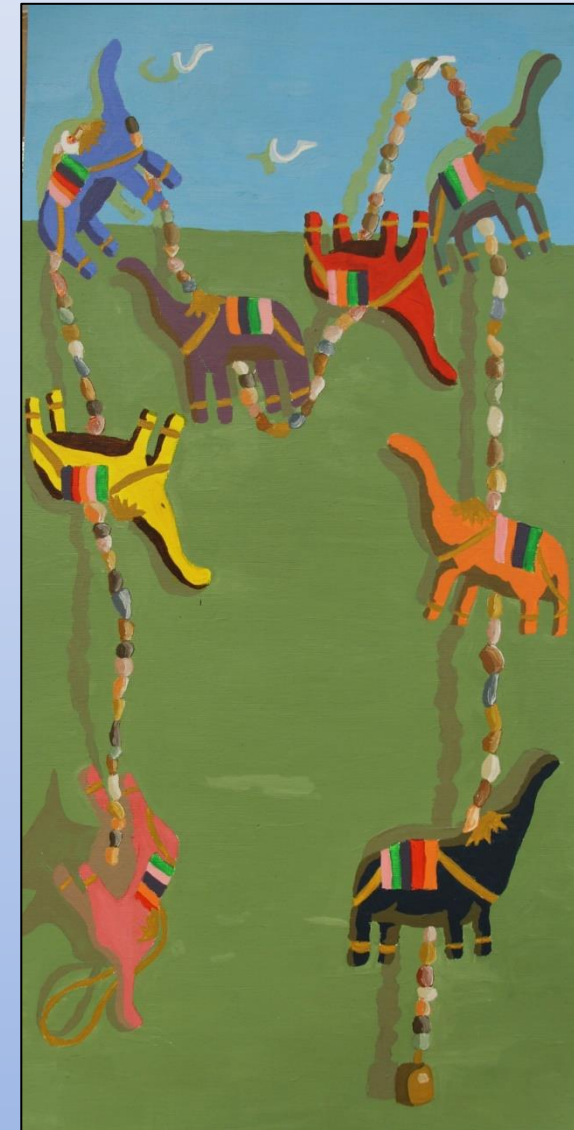
This is the elephant ornament hanging on four hooks above my bed. At home I also have two elephant cushions. I used these cushions as well as others to cover the top of the bed.

I think the elephants here are lost as there is so much else in the drawing.

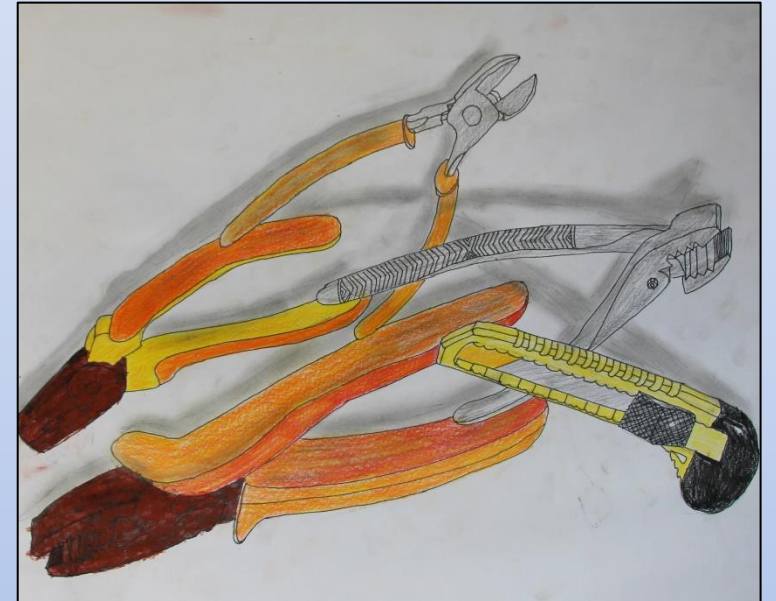
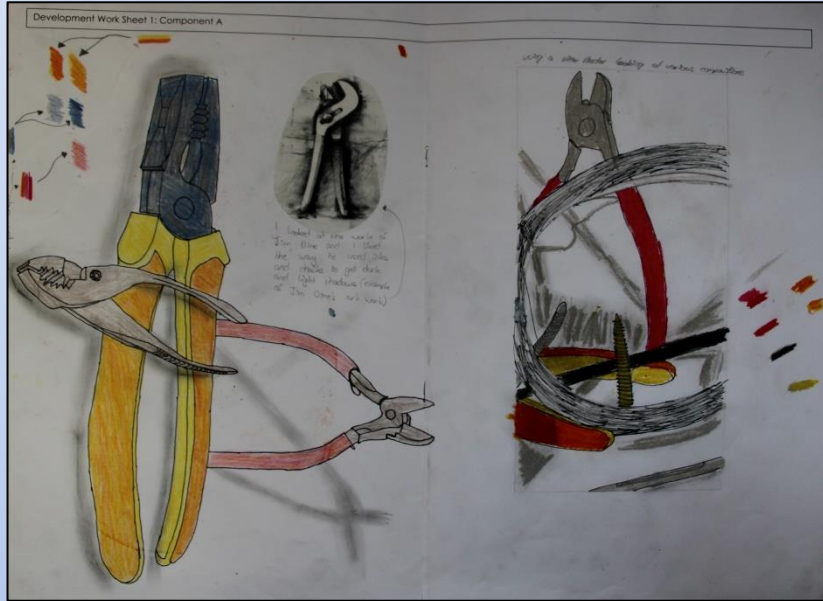
I spaced my drawing here. I don't like it as much as the original one. I prefer all the negative space to play around with.

Above I used points as a trial run. I loved the use of it rather than colouring pencils. For my final piece I am going to use paint.

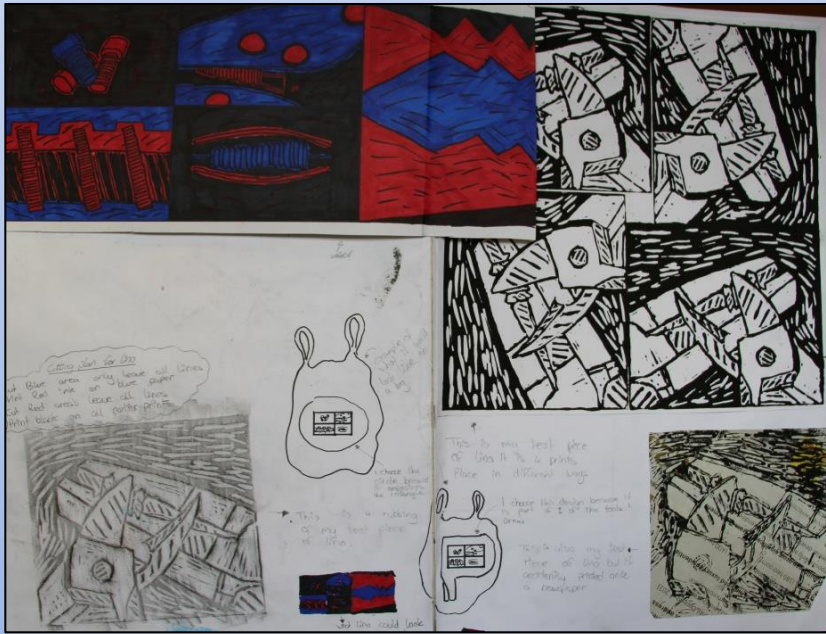
I also tested colouring pencils but preferred paint.



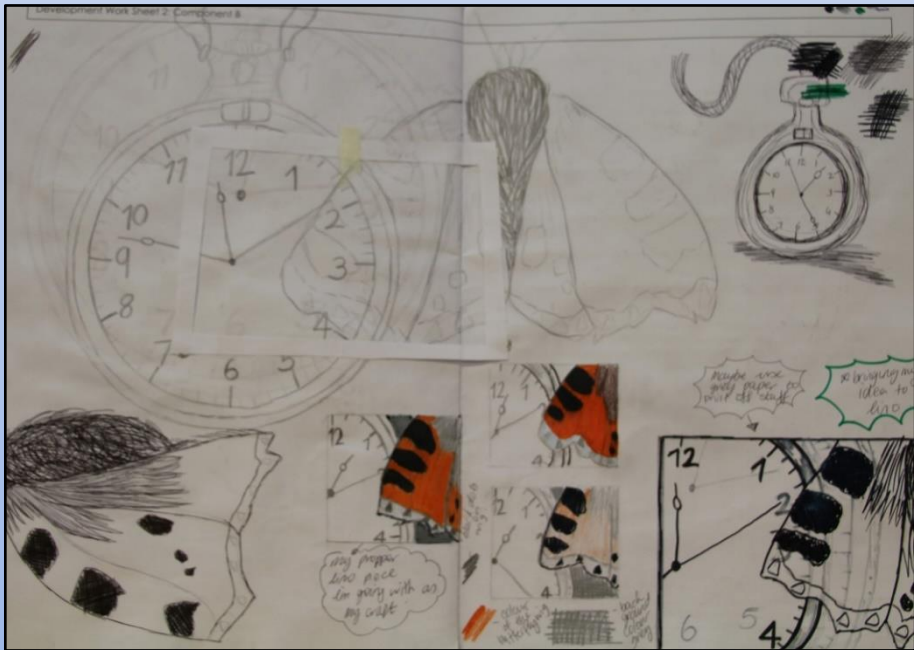
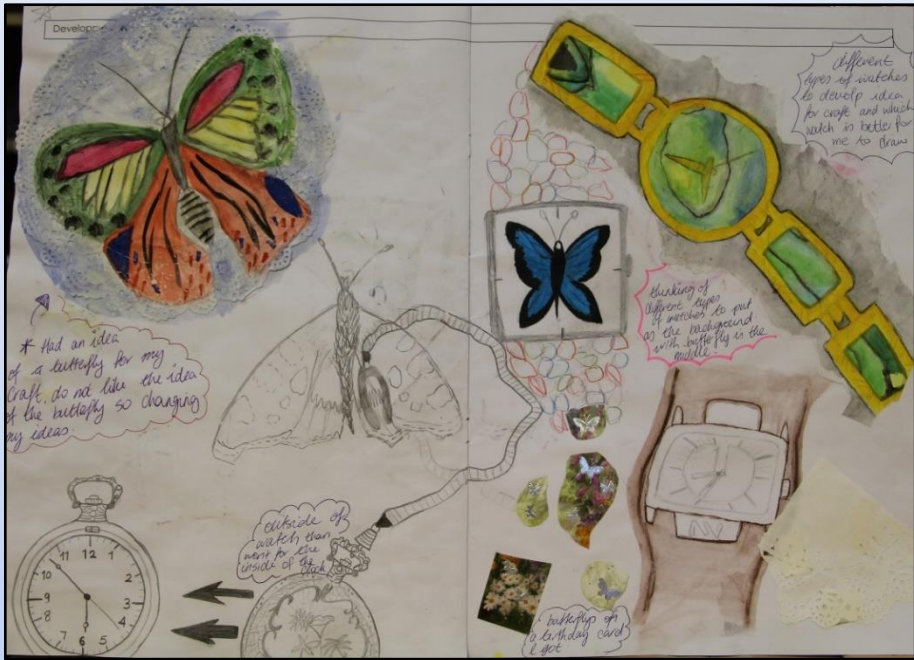
Still Life



Developing towards Craft Blockprinting







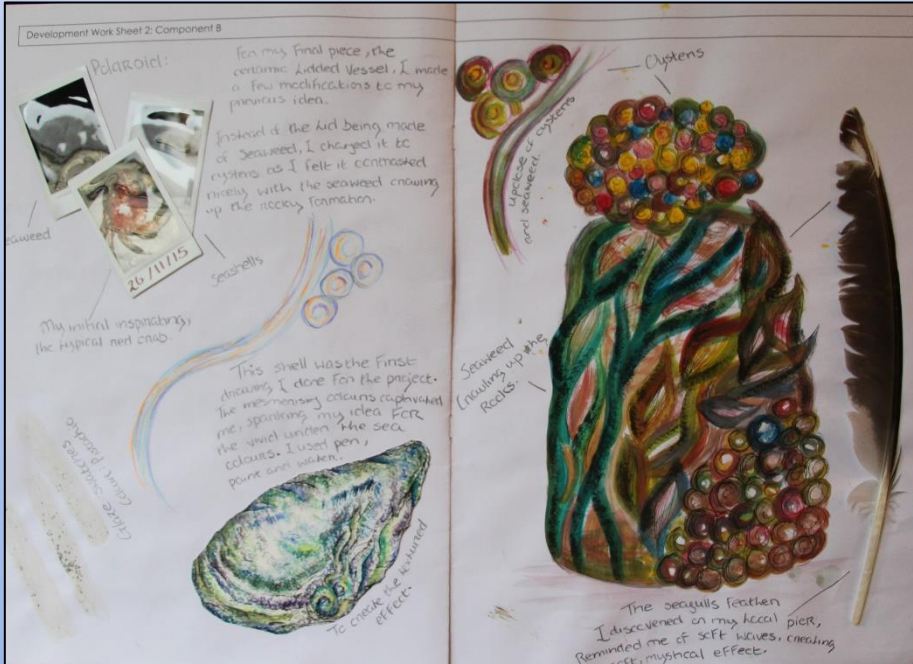
Developing to Imaginative Composition

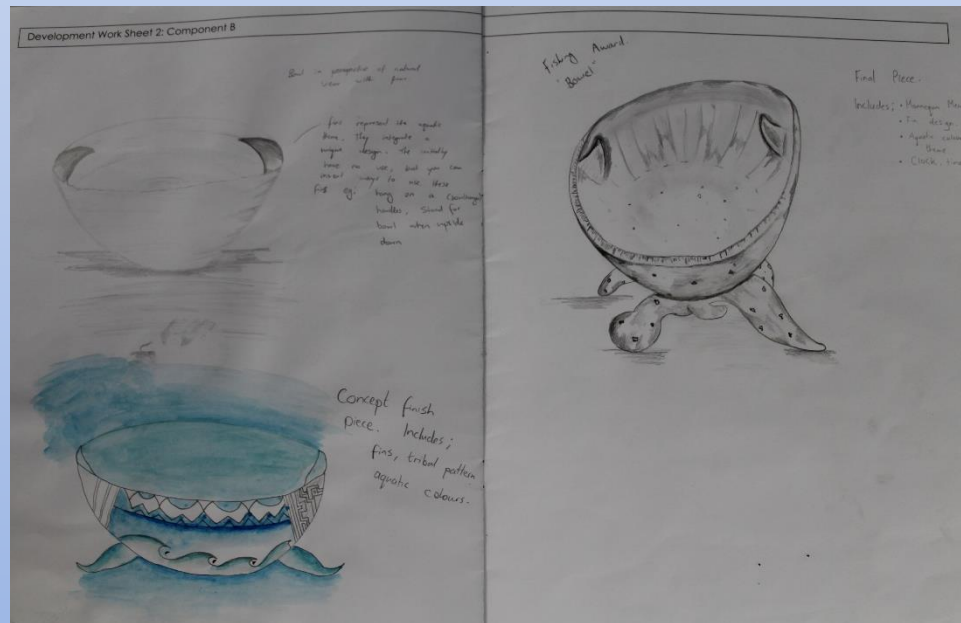
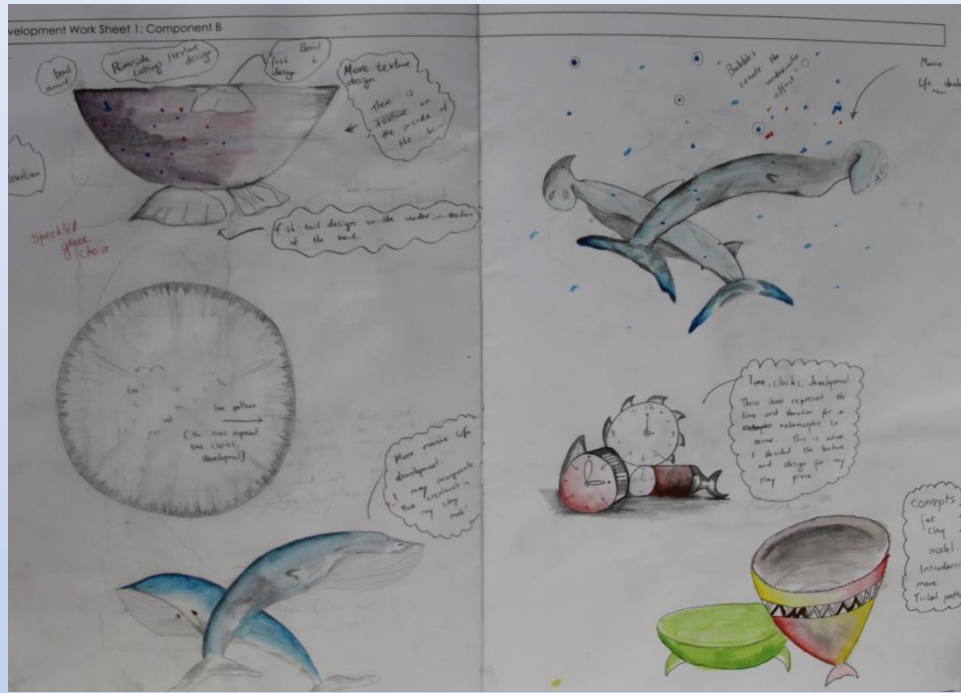


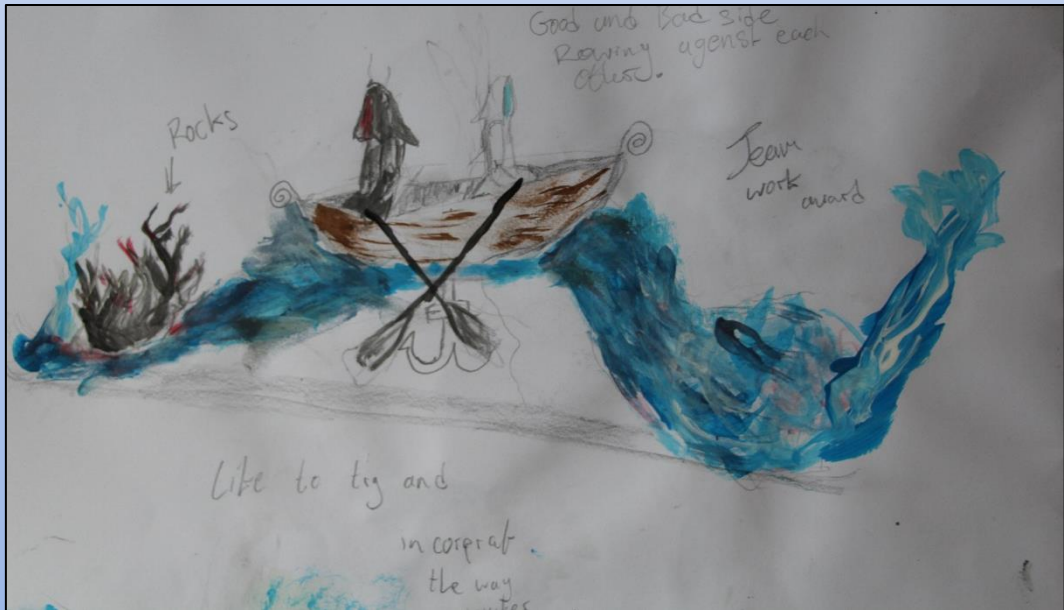




Developing towards Pottery









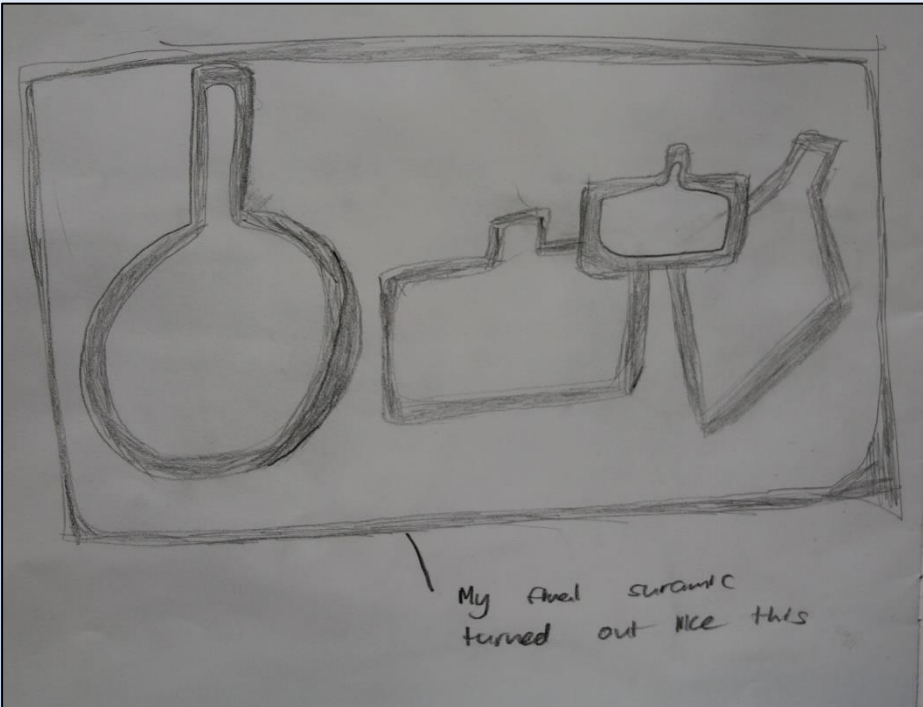
Megamorphs

Transferring the shape of perfume bottles into the work of Mondrian

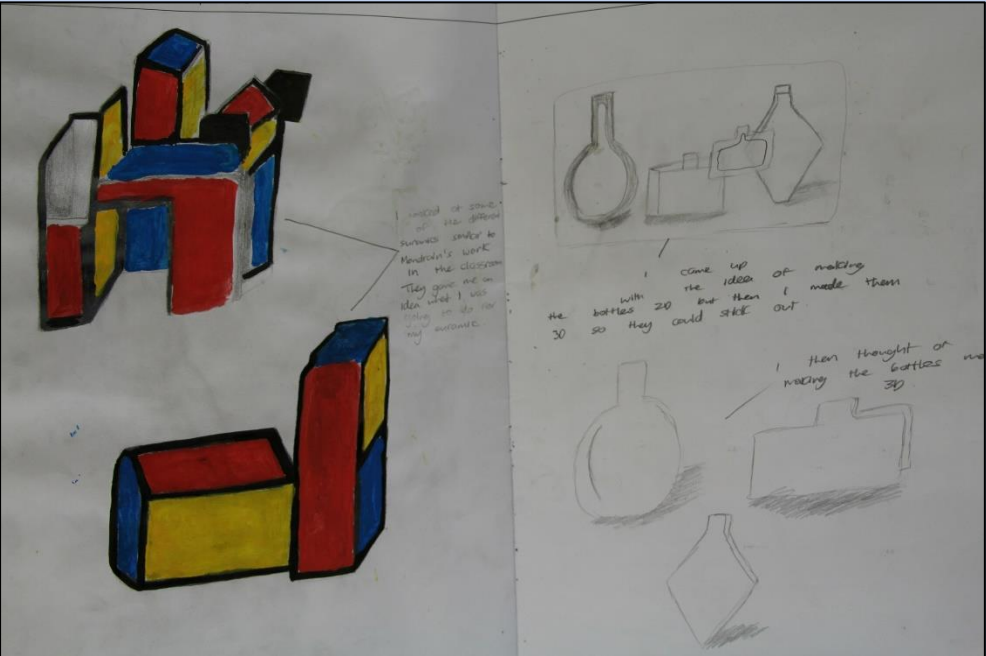
I used the work of Mondrian so I thought that I would draw the shape of the bottles and painted them similarly to Mondrian

I painted this using heavy paint and when it was dry I traced it using heavy marker to make it stand out

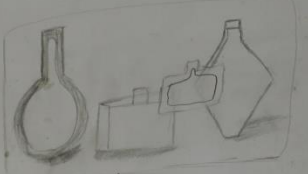
Mondrian



My final ceramic turned out nice this



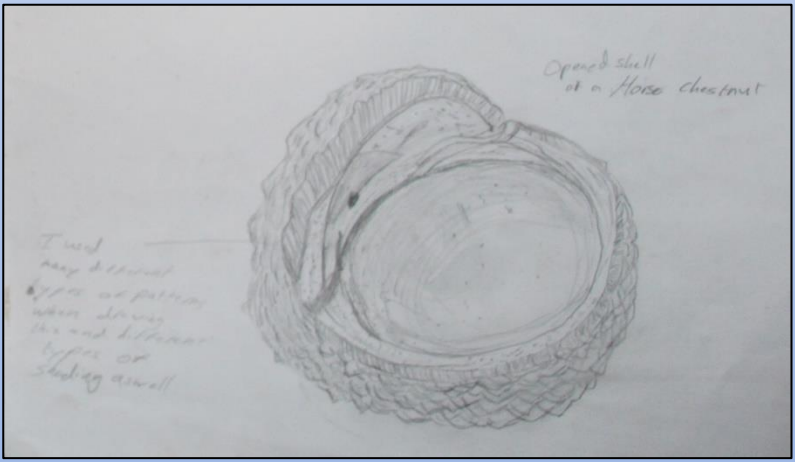
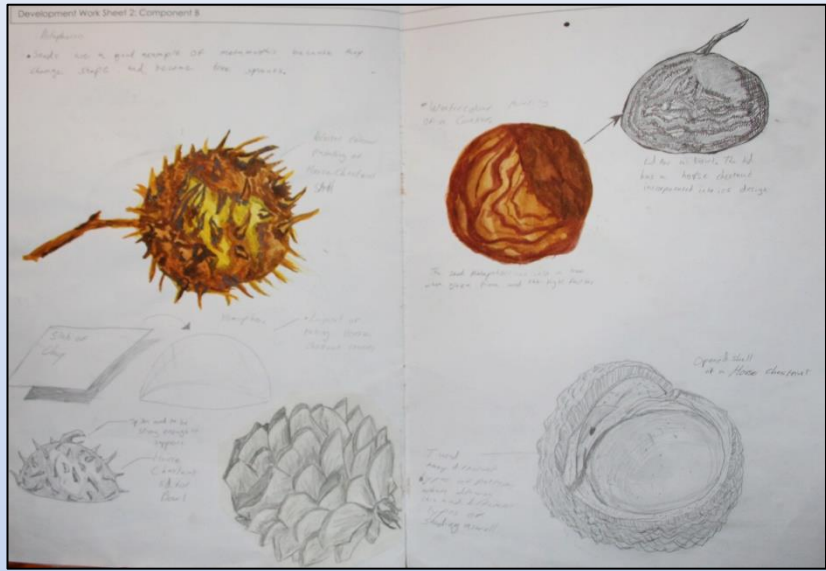
instead of some of the different shapes I used to Mondrian's work in the classroom they gave me an idea what I was doing on the ceramic



came up with the idea of making the bottles 3D but then I made them 2D so they could stick out

then thought of making the bottles 3D





Puppetry Design

The face will be made from plaster. Features will be exaggerated so they come across from a distance.

The inside of the puppet will be made from paper and wrapped in masking tape. The shoulder is card arms will be made from wire and attached to the body.

Shoulder joint

Boots will be attached to the head and arms to allow movement.

I have used my painting on paper for my puppet.

Development Work Sheet 2: Component B *Fairy tale princess*

I have made sketches of some of the ideas I had for my puppet.

I have chosen to work with the colour pink. I am going to use light pink fabric and red for the dress.

The light pink net will be used for the underskirt of the dress.

The roses will be painted on using fabric paints.

The rod is connected to the back of the head.

I have done this design as it is my favourite. I did my theme, had the colours I had chosen for my theme, and it is the right length for a rod puppet.

wire and beads for the tiara.

Thick wool for the hair.

The rod is attached to the head for movement.

Thin wire

A separate strip of material will be added on for the neck piece.

Thin wire to create an edge.

The lace will be selected on using thin thread.

Pieces of lace trim for the edges.

The green leaves will stand out from the skirt.

A piece of the lace trim folded around to form a bracelet with a bead.

Head is wrapped in masking tape to make it easy to plaster over.

Head is attached on by wire.

The wire is covered in paper and masking tape to make the arm and is then painted.

Arms are made from thin wire.

Separate green pieces of material will be used to make the leaves. They will be glued on using a hot gluegun.

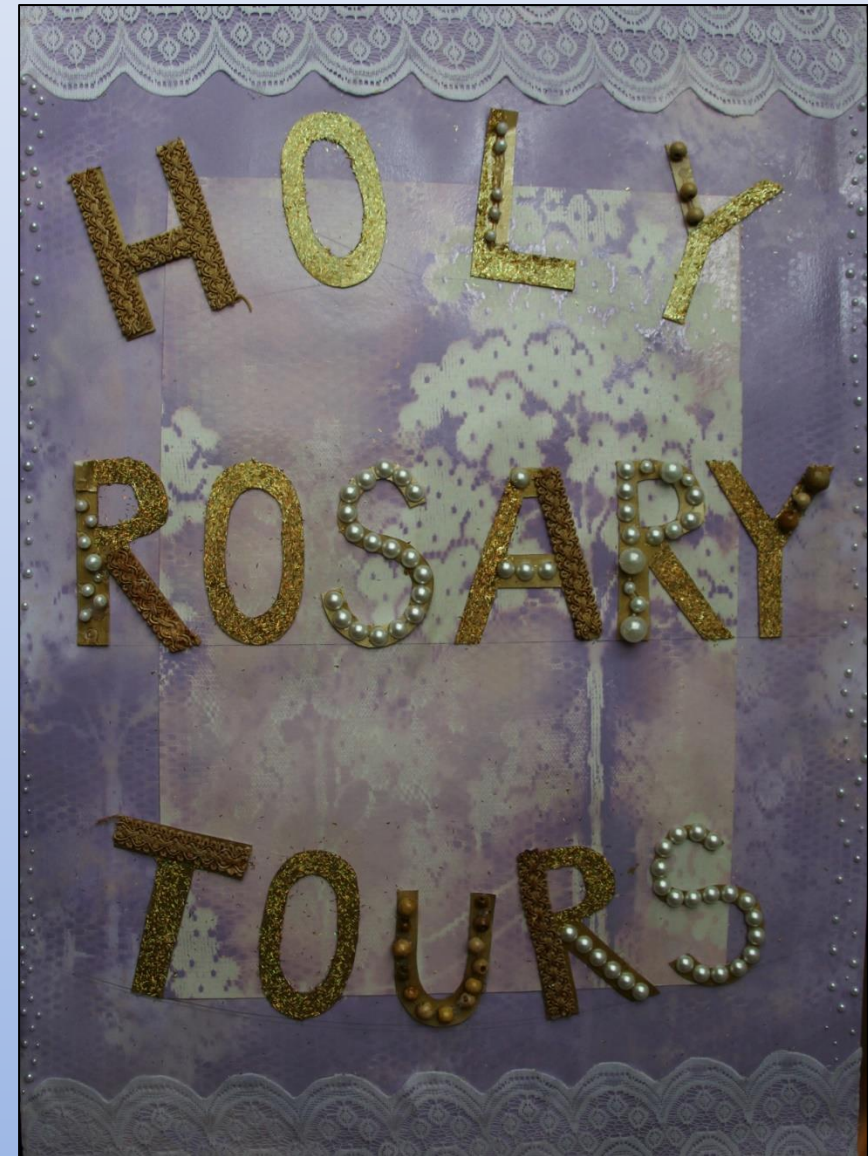
Fairytale Princess.

Developing Fonts

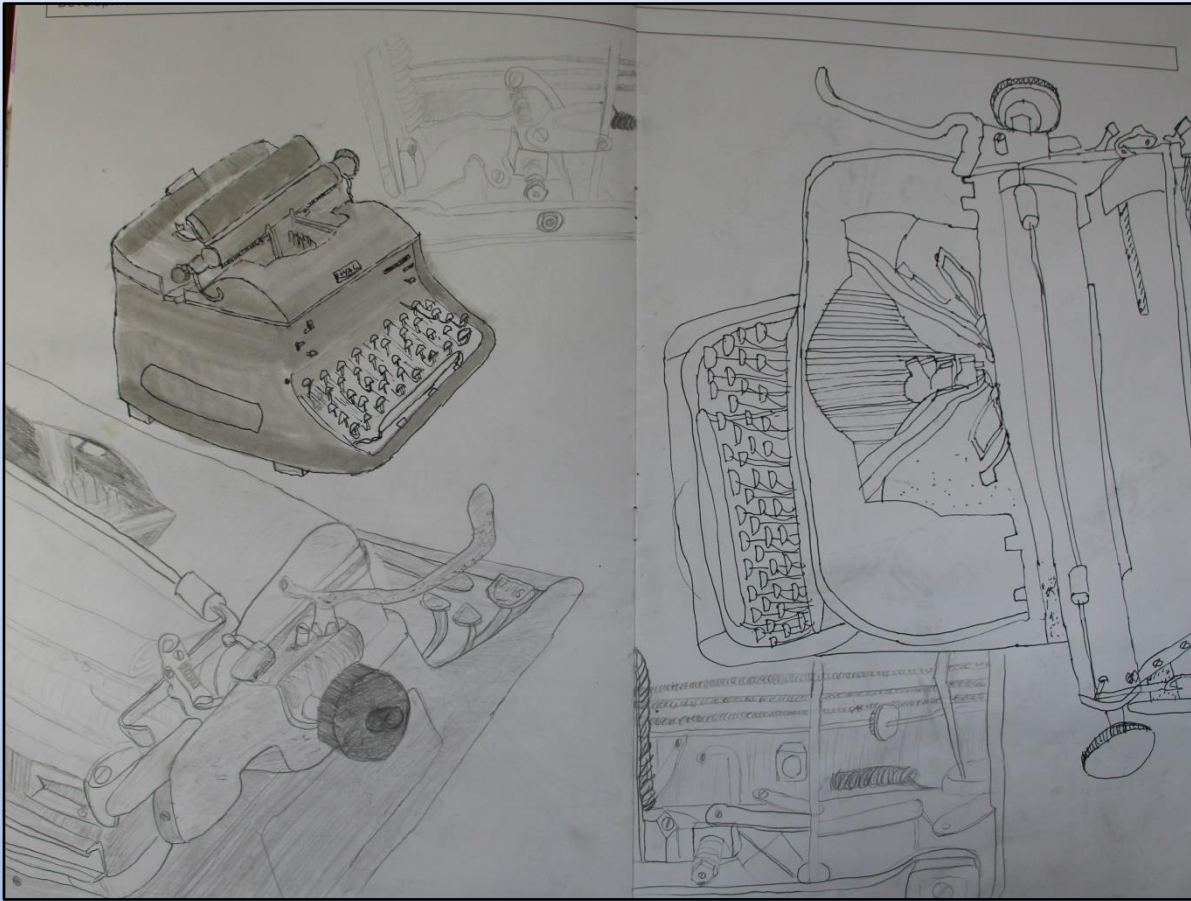




Poster



Other 5th Year Development Examples



Development sketches

using a viewfinder to simplify images

Looking at shapes.

Thinking about composition/layouts

But I prefer to do an overall view.

Cutting plan:

- (1) Cut lightest colour first (yellow) leave all lines
- (2) Paint orange ink on yellow paper.
- (3) Cut orange areas leave all black lines
- (4) Paint black ink over previously printed sheets.

of line cuts in printing

colour scheme ideas:

M.K.





Development Work Sheet 2: Component B

Self portrait. Inspired by ed sheeran album cover. Spotlight torch on one side of face. Other side in shadow.



album covers

Thumbnail of
an album
cover
used
and stick
on my face



Evan Murray

Evan Murray



Picture of my face pressed against glass

I pressed my face onto the page with foundation on my face. Put red lipstick on my lips and pressed my lips onto the page and slide a piece of glass on

Picture of my face pressed against glass

my face pressed against glass

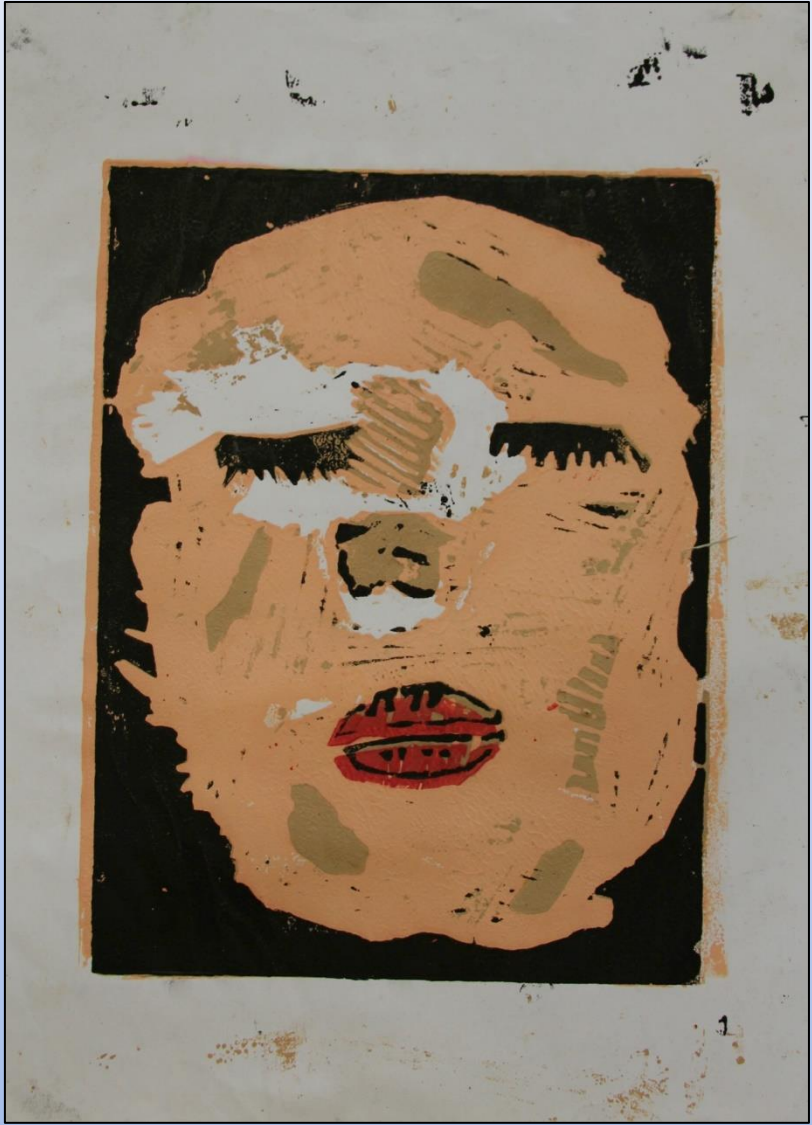
I pressed my face against a piece of glass and took a picture I then drew the picture of my face pressed

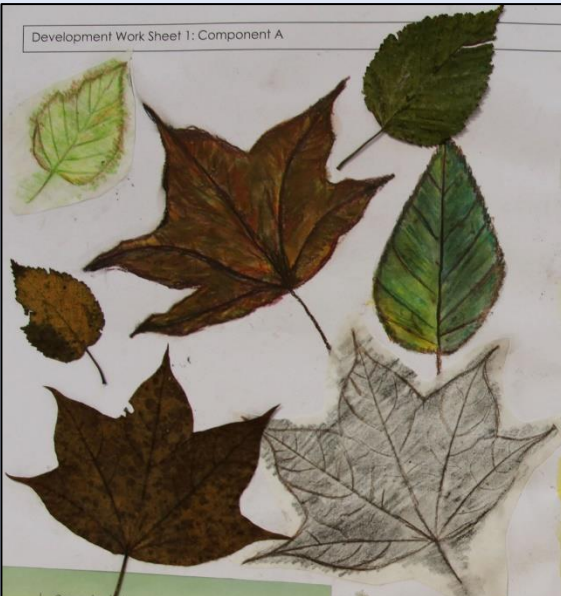
Make up on eye Transformation of eye.

Lips

Jenny Saville (Blendercase)

high heel Transformation on a night out





I decided to use ink to experiment with different mediums. I used these colours because they tie in with colours in the decaying

Here I took fallen leaves that were decaying I liked how the colours were similar to the colours of the bevising I also liked how the leaves were forgotten about after these have been up just like my doll.



I drew this hand to symbolise how something so delicate can cause much damage. I also liked how the colours in the hand

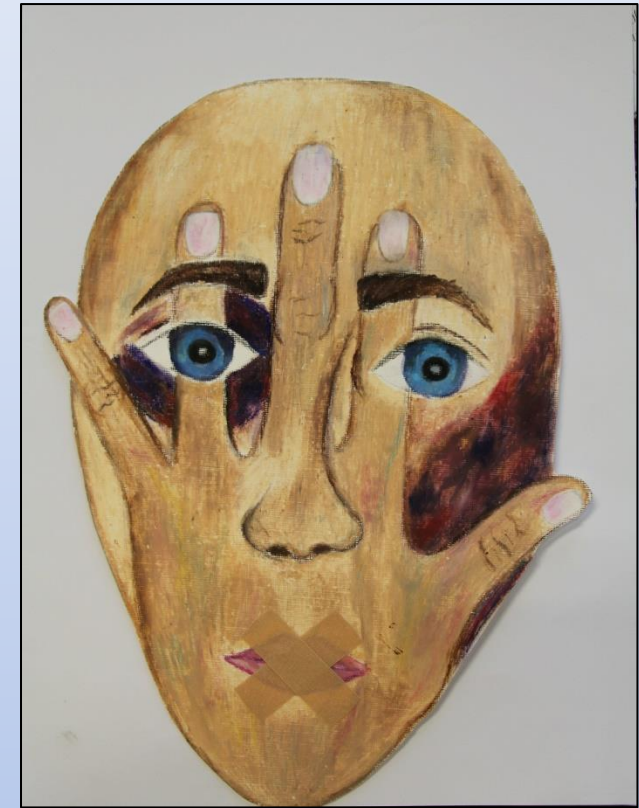


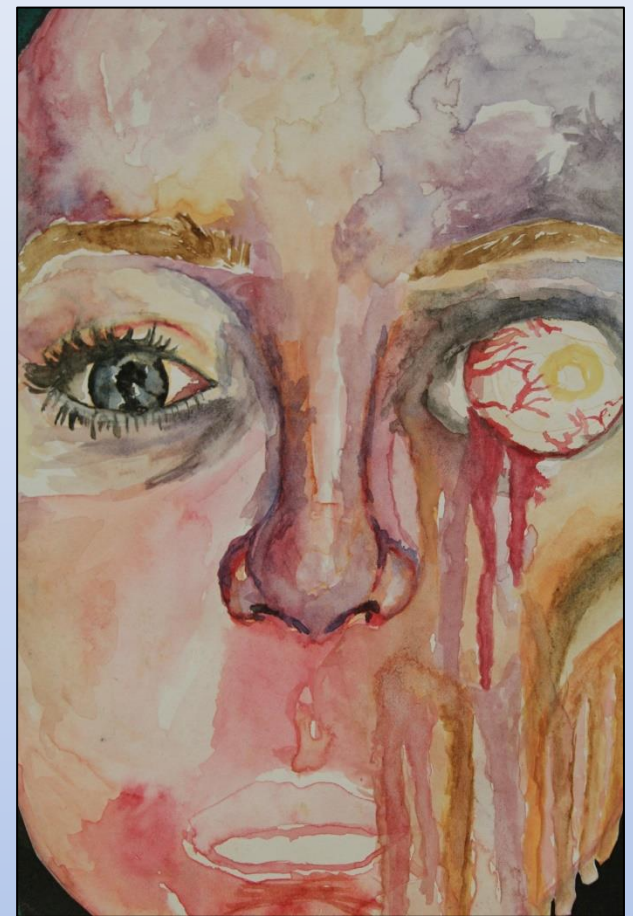
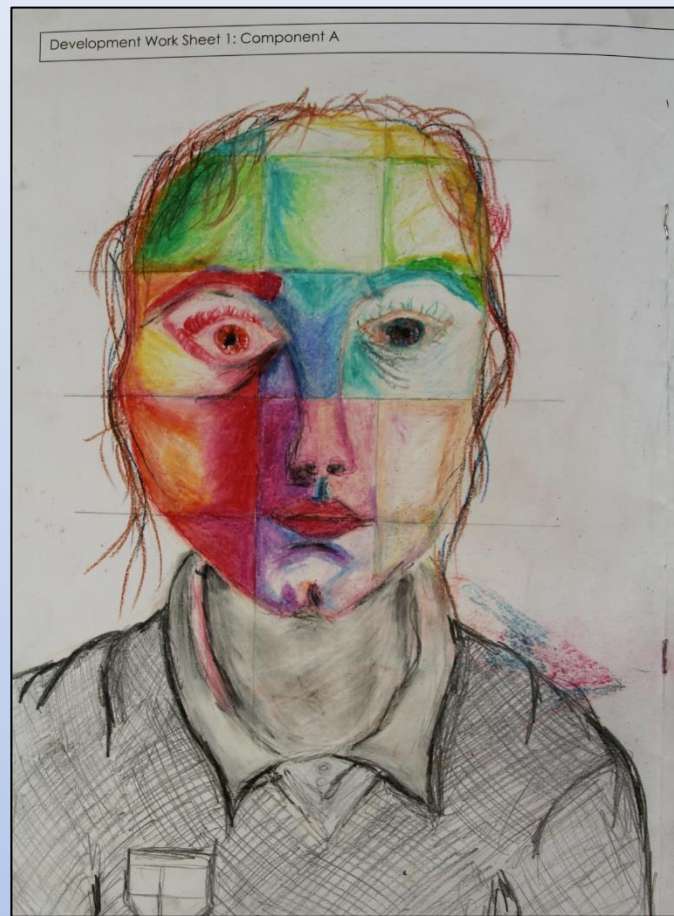
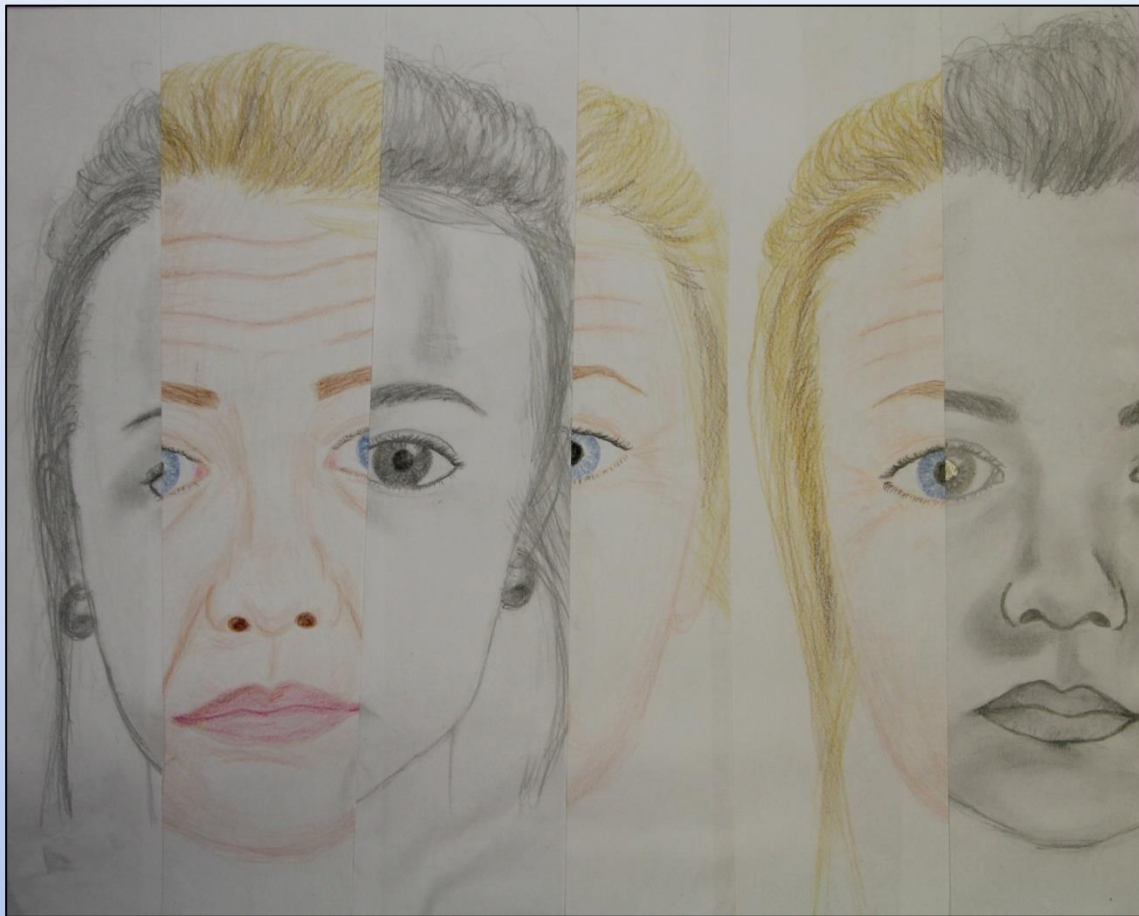
I liked how the colours in the flower are similar to the bevising

Here I with and an in third ch

I really like the cold the be so I shall experiment with other

ent- es to he bevising





Question and Answers

Key Messages

The use of primary sources is required in this Assessment Framework

Evidence of the design footprint is an integral component of the student's work

The authenticity of the work and the adherence to the allowed timeframe are essential ethical considerations



Professional Development
Service for Teachers

An tSeirbhís um Fhorbairt
Ghairmiúil do Mhúinteoirí

www.pdst.ie



© PDST 2014

This work is made available under the terms of the Creative Commons Attribution Share Alike 3.0 Licence <http://creativecommons.org/licenses/by-sa/3.0/ie/>. You may use and re-use this material (not including images and logos) free of charge in any format or medium, under the terms of the Creative Commons Attribution Share Alike Licence.



AN ROINN | DEPARTMENT OF
OIDEACHAIS | EDUCATION
AGUS SCILEANNA | AND SKILLS

The PDST is funded by the Teacher Education Section (TES)
of the Department of Education and Skills (DES) and is managed
by Dublin West Education Centre



Dublin West Education Centre